



# PRINCE SHRI VENKATESWARA ARTS AND SCIENCE COLLEGE

Gowrivakkam, Chennai-600073.

Affiliated to University of Madras, ISO 9001:2015 Certified Institution

## FACULTY FEEDBACK ON CURRICULUM, INFRASTRUCTURE FACILITIES & AMBIENCE OF THE INSTITUTION – ANALYSIS REPORT

Academic Year                                 2020-21  
Department                                    B.Sc. Biochemistry  
Number of Respondents                    4

Feedback Rate: Strongly Agree (5), Agree (4), Neutral (3), Disagree (2), Strongly Disagree (1)

S. No	Feedback on Curriculum, infrastructure facilities & ambience of the institution	5	4	3	2	1
1	Rate the sequence of the courses provided in the curriculum (Related to Curriculum)	3	1	0	0	0
2	Rate the syllabus of the courses in relation to the competencies expected out of the course (Related to Curriculum)	3	0	1	0	0
3	Rate the Curriculum facilitation for adoption of new techniques/education tools / strategies in teaching. (Related to Curriculum)	2	2	0	0	0
4	Rate the coverage of Programme / course outcome with the curriculum (Related to Curriculum)	3	0	0	1	0
5	Rate the allocation of the credits and contact hours (L-T-P) to the courses (Related to Curriculum)	2	2	0	0	0
6	Rate the offering of the electives in terms of their relevance to the specialization streams and technological advancements (Related to Curriculum)	2	2	0	0	0
7	Rate the courses in terms of extra learning or self-learning considering the design of the courses. (Related to Curriculum)	3	1	0	0	0
8	Rate the professional development, faculty development and administrative training programs conducted by the institution (Related to Curriculum)	2	1	1	0	0



## PRINCE SHRI VENKATESWARA ARTS AND SCIENCE COLLEGE

Gowrivakkam, Chennai-600073.

Affiliated to University of Madras, ISO 9001:2015 Certified Institution

9	Rate the composition of the courses in terms of Language papers, Core Papers, Allied Papers, Elective Papers, Soft Skills, Non-major Electives, Value Education, Project etc. (Related to Curriculum)	2	2	0	0	0
10	Rate the availability of text books, reference books, Digital Resources and Reading Material Support facilities in library and research environment (Related to infrastructure facilities & ambience of the institution)	2	1	1	0	0
11	Rate the infrastructure available in the college/ department and its usage efficiently (Related to infrastructure facilities & ambience of the institution)	3	1	0	0	0
12	Rate the classroom, lab, IT and other facilities (Related to infrastructure facilities & ambience of the institution)	3	0	1	0	0
13	Rate the maintenance of classrooms, laboratory, sports facilities, faculty cabin, toilets, rest rooms etc. (Related to infrastructure facilities & ambience of the institution)	3	1	0	0	0
14	Rate the encouragement by the institution for performing research, startup and entrepreneurial activities by the faculty (Related to ambience of the institution)	3	0	0	1	0
15	Rate the opportunity extended and financial aid to participate in Faculty development, Conferences, Workshops and etc., (Related to ambience of the institution)	2	2	0	0	0
16	Rate the working environment such as the relationship with co-workers and superiors, organizational culture etc. (Related to ambience of the institution)	3	1	0	0	0
17	Rate the faculty welfare measures taken by the institution (Related to ambience of the institution)	2	2	0	0	0
18	Rate the recognition/ appraisal system / Incentive/ Appreciation of the individual work by the institution (Related to ambience of the institution)	2	2	0	0	0
19	Rate the encouragement for taking-up consultancy works (Related to ambience of the institution)	2	1	1	0	0
20	Rate the uniform work distribution and work load for all the faculty in the department (Related to ambience of the institution)	2	2	0	0	0



*B. Kalpana*  
**PRINCIPAL**  
PRINCE SHRI VENKATESHWARA  
ARTS AND SCIENCE COLLEGE  
GOWRIVAKKAM, CHENNAI-600 073.



**PRINCE SHRI VENKATESWARA ARTS AND SCIENCE COLLEGE**

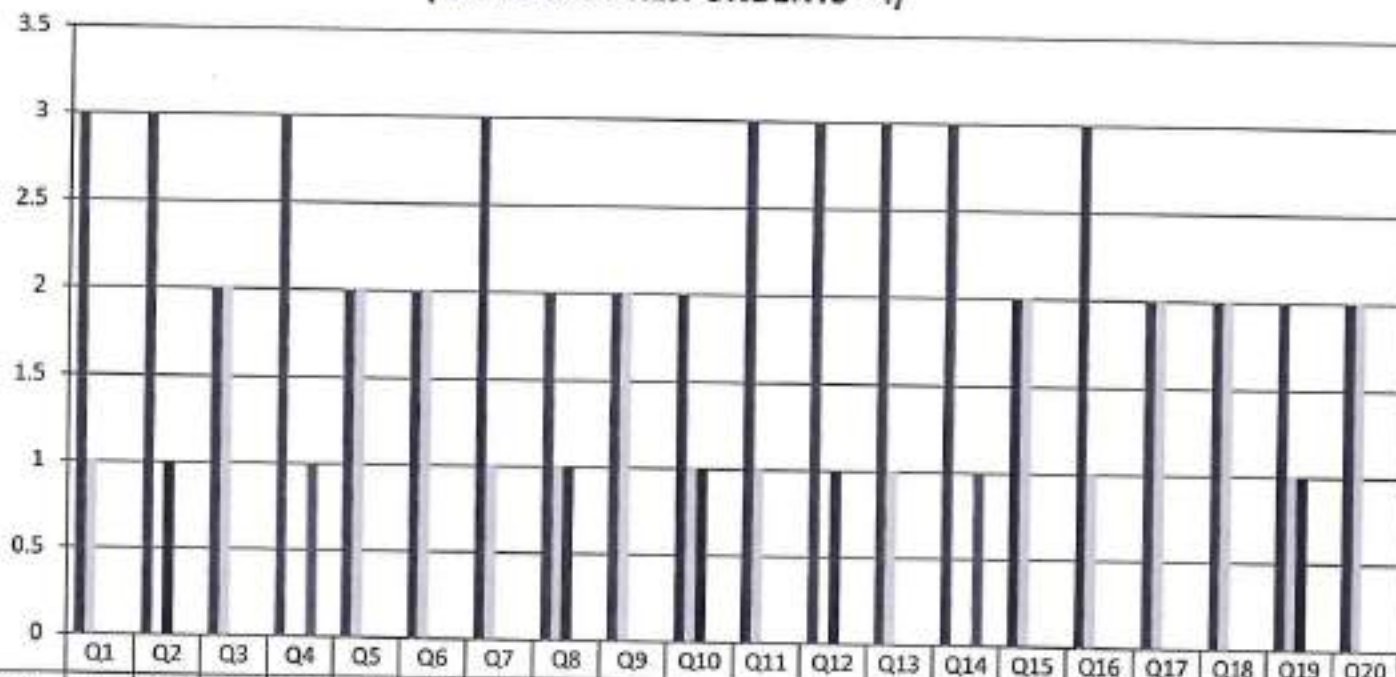
Gowrivakkam, Chennai-600073.

Affiliated to University of Madras, ISO 9001:2015 Certified Institution

**FACULTY FEEDBACK ON CURRICULUM, INFRASTRUCTURE  
FACILITIES & AMBIENCE OF THE INSTITUTION - 2020-2021**

**B.Sc. BIOCHEMISTRY**

(NUMBER OF RESPONDENTS - 4)



	Q1	Q2	Q3	Q4	Q5	Q6	Q7	Q8	Q9	Q10	Q11	Q12	Q13	Q14	Q15	Q16	Q17	Q18	Q19	Q20
Strongly Agree (5)	3	3	2	3	2	2	3	2	2	2	3	3	3	3	2	3	2	2	2	2
Agree (4)	1	0	2	0	2	2	1	1	2	1	1	0	1	0	2	1	2	2	1	2
Neutral (3)	0	1	0	0	0	0	0	1	0	1	0	1	0	0	0	0	0	0	1	0
Disagree (2)	0	0	0	1	0	0	0	0	0	0	0	0	0	1	0	0	0	0	0	0
Strongly Disagree (1)	0	0	0	0	0	0	0	0	0	0	0	0	0	0	0	0	0	0	0	0



*B. Kalpana*  
**PRINCIPAL**

**PRINCE SHRI VENKATESHWARA  
ARTS AND SCIENCE COLLEGE  
GOWRIVAKKAM, CHENNAI-600 073.**



## PRINCE SHRI VENKATESWARA ARTS AND SCIENCE COLLEGE

Gowrivakkam, Chennai-600073.

Affiliated to University of Madras, ISO 9001:2015 Certified Institution

### FACULTY FEEDBACK ON CURRICULUM, INFRASTRUCTURE FACILITIES & AMBIENCE OF THE INSTITUTION – ANALYSIS REPORT

Academic Year                                    2020-21  
Department                                        B.Sc.-Microbiology  
Number of Respondents                        4

Feedback Rate: Strongly Agree (5), Agree (4), Neutral (3), Disagree (2), Strongly Disagree (1)

S. No	Feedback on Curriculum, infrastructure facilities & ambience of the institution	5	4	3	2	1
1	Rate the sequence of the courses provided in the curriculum (Related to Curriculum)	2	2	0	0	0
2	Rate the syllabus of the courses in relation to the competencies expected out of the course (Related to Curriculum)	2	1	1	0	0
3	Rate the Curriculum facilitation for adoption of new techniques/education tools / strategies in teaching. (Related to Curriculum)	2	1	1	0	0
4	Rate the coverage of Programme / course outcome with the curriculum (Related to Curriculum)	3	0	1	0	0
5	Rate the allocation of the credits and contact hours (L-T-P) to the courses (Related to Curriculum)	3	0	1	0	0
6	Rate the offering of the electives in terms of their relevance to the specialization streams and technological advancements (Related to Curriculum)	2	2	0	0	0
7	Rate the courses in terms of extra learning or self-learning considering the design of the courses. (Related to Curriculum)	2	0	2	0	0
8	Rate the professional development, faculty development and administrative training programs conducted by the institution (Related to Curriculum)	2	1	1	0	0



## PRINCE SHRI VENKATESWARA ARTS AND SCIENCE COLLEGE

Gowrivakkam, Chennai-600073.

Affiliated to University of Madras, ISO 9001:2015 Certified Institution

9	Rate the composition of the courses in terms of Language papers, Core Papers, Allied Papers, Elective Papers, Soft Skills, Non-major Electives, Value Education, Project etc. (Related to Curriculum)	2	2	0	0	0
10	Rate the availability of text books, reference books, Digital Resources and Reading Material Support facilities in library and research environment (Related to infrastructure facilities & ambience of the institution)	2	1	1	0	0
11	Rate the infrastructure available in the college/ department and its usage efficiently (Related to infrastructure facilities & ambience of the institution)	2	0	2	0	0
12	Rate the classroom, lab, IT and other facilities (Related to infrastructure facilities & ambience of the institution)	3	0	1	0	0
13	Rate the maintenance of classrooms, laboratory, sports facilities, faculty cabin, toilets, rest rooms etc. (Related to infrastructure facilities & ambience of the institution)	3	1	0	0	0
14	Rate the encouragement by the institution for performing research, startup and entrepreneurial activities by the faculty (Related to ambience of the institution)	3	0	0	1	0
15	Rate the opportunity extended and financial aid to participate in Faculty development, Conferences, Workshops and etc., (Related to ambience of the institution)	2	2	0	0	0
16	Rate the working environment such as the relationship with co-workers and superiors, organizational culture etc. (Related to ambience of the institution)	3	1	0	0	0
17	Rate the faculty welfare measures taken by the institution (Related to ambience of the institution)	2	2	0	0	0
18	Rate the recognition/ appraisal system / Incentive/ Appreciation of the individual work by the institution (Related to ambience of the institution)	3	1	0	0	0
19	Rate the encouragement for taking-up consultancy works (Related to ambience of the institution)	2	1	1	0	0
20	Rate the uniform work distribution and work load for all the faculty in the department (Related to ambience of the institution)	3	1	0	0	0



*B. Kalpana*  
**PRINCIPAL**

PRINCE SHRI VENKATESHWARA  
ARTS AND SCIENCE COLLEGE  
GOWRIVAKKAM, CHENNAI-600 073.



**PRINCE SHRI VENKATESWARA ARTS AND SCIENCE COLLEGE**

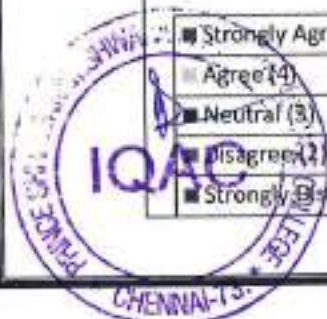
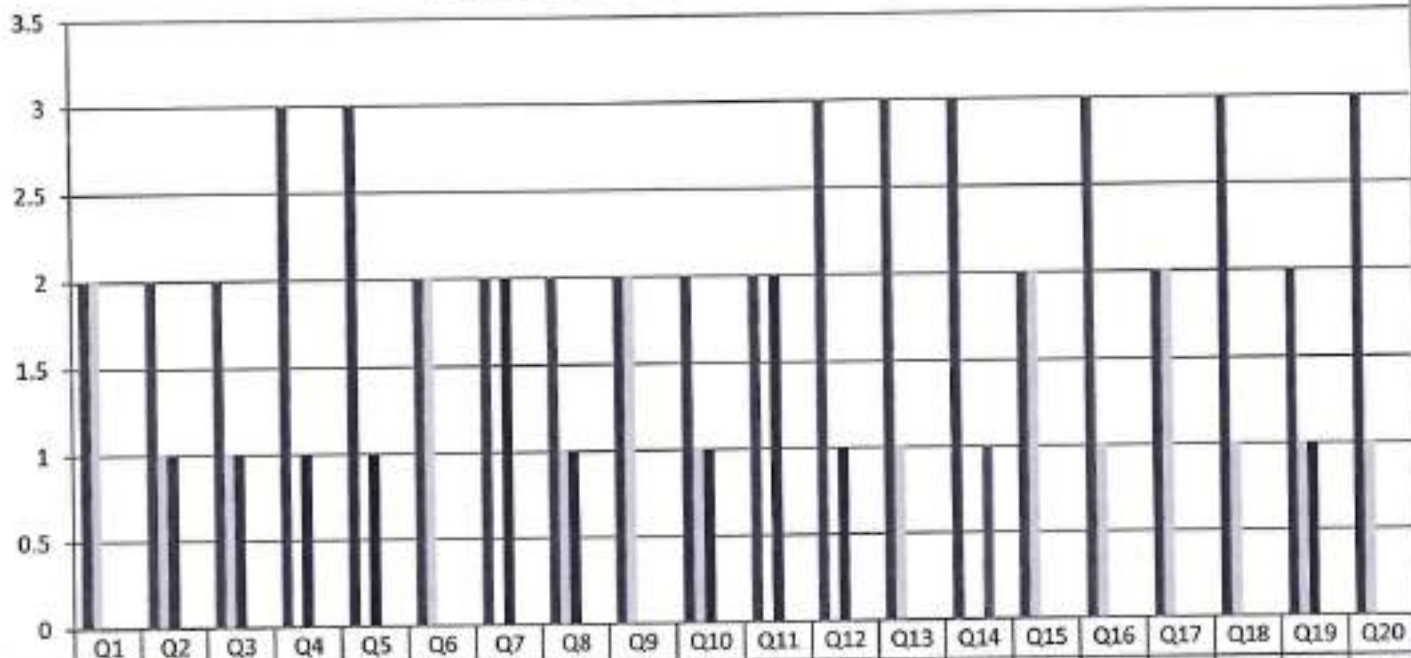
Gowrivakkam, Chennai-600073.

Affiliated to University of Madras, ISO 9001:2015 Certified Institution

**FACULTY FEEDBACK ON CURRICULUM, INFRASTRUCTURE  
FACILITIES & AMBIENCE OF THE INSTITUTION - 2020-2021**

**B.Sc. MICROBIOLOGY**

(NUMBER OF RESPONDENTS - 4)



*P. Kalpana*  
**PRINCIPAL**

PRINCE SHRI VENKATESHWARA  
ARTS AND SCIENCE COLLEGE



## PRINCE SHRI VENKATESWARA ARTS AND SCIENCE COLLEGE

Gowrivakkam, Chennai-600073.

Affiliated to University of Madras, ISO 9001:2015 Certified Institution

### FACULTY FEEDBACK ON CURRICULUM, INFRASTRUCTURE FACILITIES & AMBIENCE OF THE INSTITUTION – ANALYSIS REPORT

Academic Year

2020-21

Department

B.Sc. Electronics and Communication Science

Number of Respondents

5

Feedback Rate: Strongly Agree (5), Agree (4), Neutral (3), Disagree (2), Strongly Disagree (1)

S. No	Feedback on Curriculum, infrastructure facilities & ambience of the institution	5	4	3	2	1
1	Rate the sequence of the courses provided in the curriculum (Related to Curriculum)	3	2	0	0	0
2	Rate the syllabus of the courses in relation to the competencies expected out of the course (Related to Curriculum)	3	1	1	0	0
3	Rate the Curriculum facilitation for adoption of new techniques/education tools / strategies in teaching. (Related to Curriculum)	2	3	0	0	0
4	Rate the coverage of Programme / course outcome with the curriculum (Related to Curriculum)	3	1	0	1	0
5	Rate the allocation of the credits and contact hours (L-T-P) to the courses (Related to Curriculum)	2	3	0	0	0
6	Rate the offering of the electives in terms of their relevance to the specialization streams and technological advancements (Related to Curriculum)	2	3	0	0	0
7	Rate the courses in terms of extra learning or self-learning considering the design of the courses. (Related to Curriculum)	3	2	0	0	0
8	Rate the professional development, faculty development and administrative training programs conducted by the institution (Related to Curriculum)	2	2	1	0	0



## PRINCE SHRI VENKATESWARA ARTS AND SCIENCE COLLEGE

Gowrivakkam, Chennai-600073

Affiliated to University of Madras, ISO 9001:2015 Certified Institution

9	Rate the composition of the courses in terms of Language papers, Core Papers, Allied Papers, Elective Papers, Soft Skills, Non-major Electives, Value Education, Project etc. (Related to Curriculum)	2	3	0	0	0
10	Rate the availability of text books, reference books, Digital Resources and Reading Material Support facilities in library and research environment (Related to infrastructure facilities & ambience of the institution)	2	2	1	0	0
11	Rate the infrastructure available in the college/ department and its usage efficiently (Related to infrastructure facilities & ambience of the institution)	3	2	0	0	0
12	Rate the classroom, lab, IT and other facilities (Related to infrastructure facilities & ambience of the institution)	3	1	1	0	0
13	Rate the maintenance of classrooms, laboratory, sports facilities, faculty cabin, toilets, rest rooms etc. (Related to infrastructure facilities & ambience of the institution)	3	2	0	0	0
14	Rate the encouragement by the institution for performing research, startup and entrepreneurial activities by the faculty (Related to ambience of the institution)	3	1	0	1	0
15	Rate the opportunity extended and financial aid to participate in Faculty development, Conferences, Workshops and etc., (Related to ambience of the institution)	2	3	0	0	0
16	Rate the working environment such as the relationship with co-workers and superiors, organizational culture etc. (Related to ambience of the institution)	3	2	0	0	0
17	Rate the faculty welfare measures taken by the institution (Related to ambience of the institution)	2	3	0	0	0
18	Rate the recognition/ appraisal system / Incentive/ Appreciation of the individual work by the institution (Related to ambience of the institution)	2	3	0	0	0
19	Rate the encouragement for taking-up consultancy works (Related to ambience of the institution)	2	2	1	0	0
20	Rate the uniform work distribution and work load for all the faculty in the department (Related to ambience of the institution)	2	3	0	0	0



*B. Kalpana*  
**PRINCIPAL**  
PRINCE SHRI VENKATESHWARA  
ARTS AND SCIENCE COLLEGE  
GOWRIVAKKAM, CHENNAI-600 073.





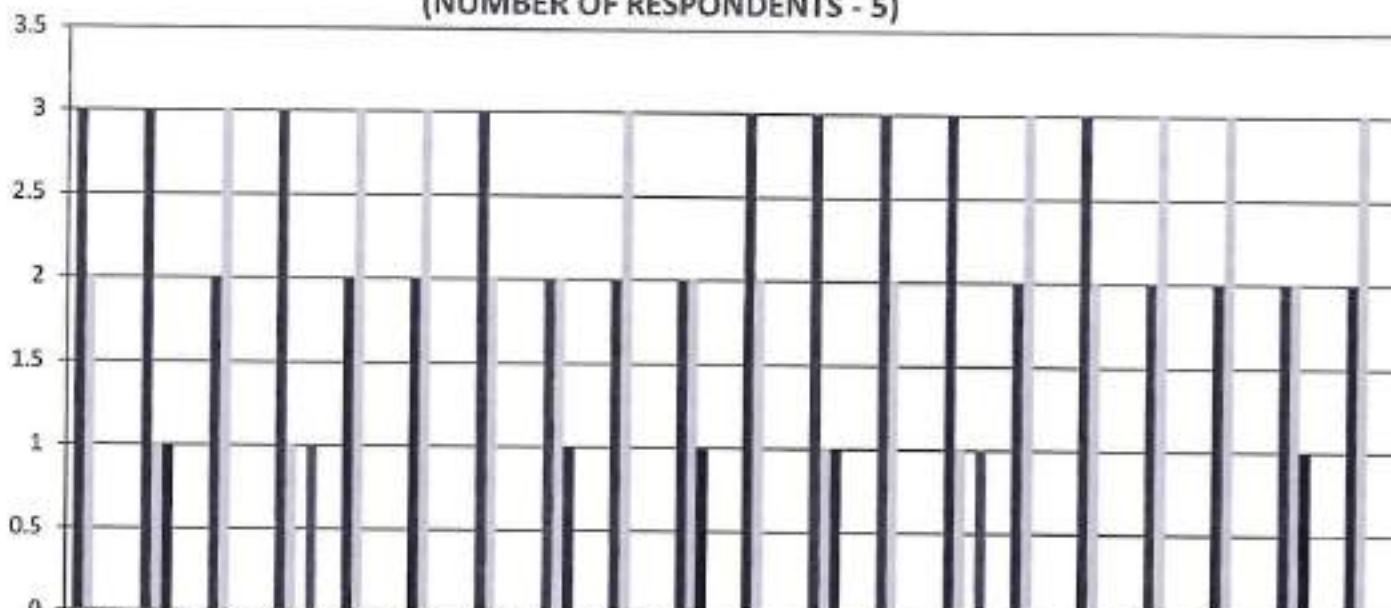
**PRINCE SHRI VENKATESWARA ARTS AND SCIENCE COLLEGE**

Gowrivakkam, Chennai-600073.

Affiliated to University of Madras, ISO 9001:2015 Certified Institution

**FACULTY FEEDBACK ON CURRICULUM, INFRASTRUCTURE  
FACILITIES & AMBIENCE OF THE INSTITUTION - 2020-2021  
B.Sc. ELECTRONICS AND COMMUNICATION SCIENCE**

(NUMBER OF RESPONDENTS - 5)



	Q1	Q2	Q3	Q4	Q5	Q6	Q7	Q8	Q9	Q10	Q11	Q12	Q13	Q14	Q15	Q16	Q17	Q18	Q19	Q20
Strongly Agree (5)	3	3	2	3	2	2	3	2	2	2	3	3	3	3	2	3	2	2	2	2
Agree (4)	2	1	3	1	3	3	2	2	3	2	2	1	2	1	3	2	3	3	2	3
Neutral (3)	0	1	0	0	0	0	0	1	0	1	0	1	0	0	0	0	0	0	1	0
Disagree (2)	0	0	0	1	0	0	0	0	0	0	0	0	0	1	0	0	0	0	0	0
Strongly Disagree (1)	0	0	0	0	0	0	0	0	0	0	0	0	0	0	0	0	0	0	0	0



*B. Kalpana*  
**PRINCIPAL**  
PRINCE SHRI VENKATESHWARA  
ARTS AND SCIENCE COLLEGE  
GOWRIVAKKAM CHENNAI-600 073



## PRINCE SHRI VENKATESWARA ARTS AND SCIENCE COLLEGE

Gowrivakkam, Chennai-600073

Affiliated to University of Madras, ISO 9001:2015 Certified Institution

### FACULTY FEEDBACK ON CURRICULUM, INFRASTRUCTURE FACILITIES & AMBIENCE OF THE INSTITUTION – ANALYSIS REPORT

**Academic Year** 2020-21  
**Department** B.Sc.-Computer Science  
**Number of Respondents** 11

Feedback Rate: Strongly Agree (5), Agree (4), Neutral (3), Disagree (2), Strongly Disagree (1)

S. No	Feedback on Curriculum, infrastructure facilities & ambience of the institution	5	4	3	2	1
1	Rate the sequence of the courses provided in the curriculum (Related to Curriculum)	6	4	1	0	0
2	Rate the syllabus of the courses in relation to the competencies expected out of the course (Related to Curriculum)	6	3	2	0	0
3	Rate the Curriculum facilitation for adoption of new techniques/education tools / strategies in teaching. (Related to Curriculum)	5	5	1	0	0
4	Rate the coverage of Programme / course outcome with the curriculum (Related to Curriculum)	6	3	1	1	0
5	Rate the allocation of the credits and contact hours (L-T-P) to the courses (Related to Curriculum)	5	5	1	0	0
6	Rate the offering of the electives in terms of their relevance to the specialization streams and technological advancements (Related to Curriculum)	5	5	1	0	0
7	Rate the courses in terms of extra learning or self-learning considering the design of the courses. (Related to Curriculum)	6	4	1	0	0
8	Rate the professional development, faculty development and administrative training programs conducted by the institution (Related to Curriculum)	5	4	2	0	0



## PRINCE SHRI VENKATESWARA ARTS AND SCIENCE COLLEGE

Gowrivakkam, Chennai-600073.

Affiliated to University of Madras, ISO 9001:2015 Certified Institution

9	Rate the composition of the courses in terms of Language papers, Core Papers, Allied Papers, Elective Papers, Soft Skills, Non-major Electives, Value Education, Project etc. (Related to Curriculum)	5	5	1	0	0
10	Rate the availability of text books, reference books, Digital Resources and Reading Material Support facilities in library and research environment (Related to infrastructure facilities & ambience of the institution)	5	4	2	0	0
11	Rate the infrastructure available in the college/ department and its usage efficiently (Related to infrastructure facilities & ambience of the institution)	6	4	1	0	0
12	Rate the classroom, lab, IT and other facilities (Related to infrastructure facilities & ambience of the institution)	6	3	2	0	0
13	Rate the maintenance of classrooms, laboratory, sports facilities, faculty cabin, toilets, rest rooms etc. (Related to infrastructure facilities & ambience of the institution)	6	4	1	0	0
14	Rate the encouragement by the institution for performing research, startup and entrepreneurial activities by the faculty (Related to ambience of the institution)	6	3	1	1	0
15	Rate the opportunity extended and financial aid to participate in Faculty development, Conferences, Workshops and etc., (Related to ambience of the institution)	5	5	1	0	0
16	Rate the working environment such as the relationship with co-workers and superiors, organizational culture etc. (Related to ambience of the institution)	6	4	1	0	0
17	Rate the faculty welfare measures taken by the institution (Related to ambience of the institution)	5	5	1	0	0
18	Rate the recognition/ appraisal system / Incentive/ Appreciation of the individual work by the institution (Related to ambience of the institution)	5	5	1	0	0
19	Rate the encouragement for taking-up consultancy works (Related to ambience of the institution)	5	4	2	0	0
20	Rate the uniform work distribution and work load for all the faculty in the department (Related to ambience of the institution)	5	5	1	0	0



*B. Kalpana*  
**PRINCIPAL**

PRINCE SHRI VENKATESHWARA  
ARTS AND SCIENCE COLLEGE  
GOWRIVAKKAM, CHENNAI-600 073.



**PRINCE SHRI VENKATESWARA ARTS AND SCIENCE COLLEGE**

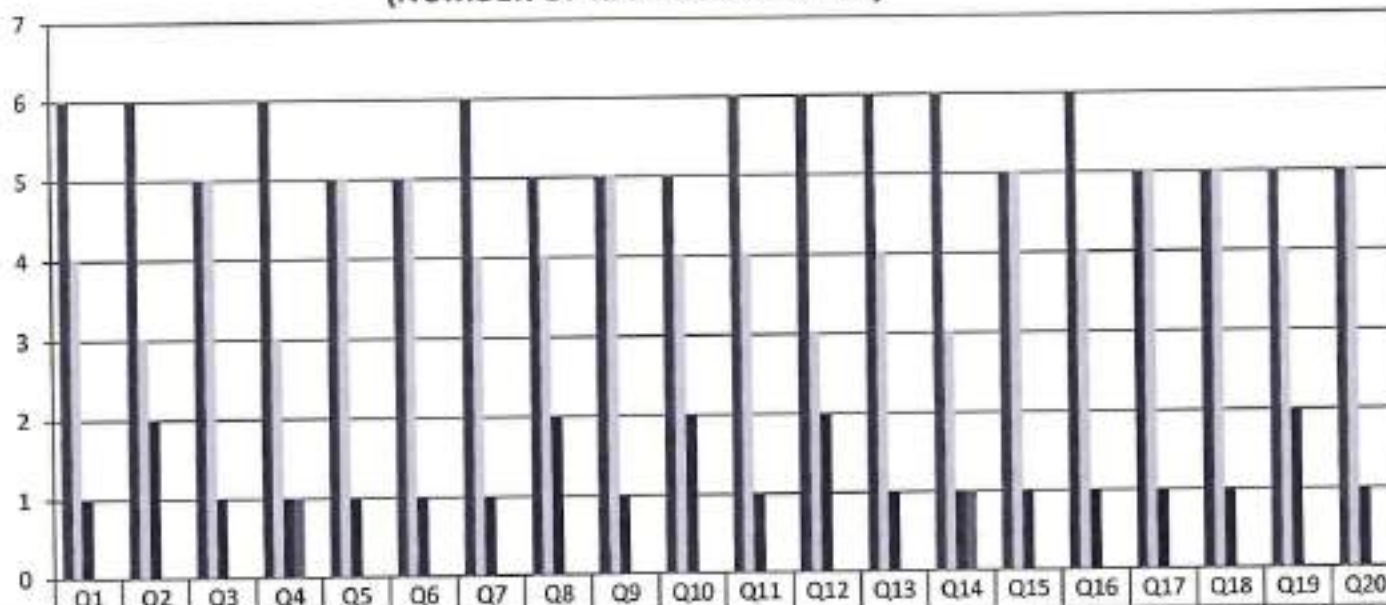
Gowrivakkam, Chennai-600073.

Affiliated to University of Madras, ISO 9001:2015 Certified Institution

**FACULTY FEEDBACK ON CURRICULUM, INFRASTRUCTURE FACILITIES & AMBIENCE OF THE INSTITUTION - 2020-2021**

**B.Sc. COMPUTER SCIENCE**

(NUMBER OF RESPONDENTS - 11)



Strongly Agree (5)	6	6	5	6	5	5	6	5	5	5	6	6	6	6	5	6	5	5	5	5
Agree (4)	4	3	5	3	5	5	4	4	5	4	4	3	4	3	5	4	5	5	4	5
Neutral (3)	1	2	1	1	1	1	1	2	1	2	1	2	1	1	1	1	1	1	2	1
Disagree (2)	0	0	0	1	0	0	0	0	0	0	0	0	0	1	0	0	0	0	0	0
Strongly Disagree (1)	0	0	0	0	0	0	0	0	0	0	0	0	0	0	0	0	0	0	0	0



*B. Kalpane*  
**PRINCIPAL**  
 PRINCE SHRI VENKATESWARA  
 ARTS AND SCIENCE COLLEGE  
 GOWRIVAKKAM, CHENNAI-600 073.



## PRINCE SHRI VENKATESWARA ARTS AND SCIENCE COLLEGE

Gowrivaikkam, Chennai-600073.

Affiliated to University of Madras, ISO 9001:2015 Certified Institution

### FACULTY FEEDBACK ON CURRICULUM, INFRASTRUCTURE FACILITIES & AMBIENCE OF THE INSTITUTION – ANALYSIS REPORT

**Academic Year** 2020-21  
**Department** B. Com-General  
**Number of Respondents** 14

Feedback Rate: Strongly Agree (5), Agree (4), Neutral (3), Disagree (2), Strongly Disagree (1)

S. No	Feedback on Curriculum, infrastructure facilities & ambience of the institution	5	4	3	2	1
1	Rate the sequence of the courses provided in the curriculum (Related to Curriculum)	7	5	2	0	0
2	Rate the syllabus of the courses in relation to the competencies expected out of the course (Related to Curriculum)	7	4	3	0	0
3	Rate the Curriculum facilitation for adoption of new techniques/education tools / strategies in teaching. (Related to Curriculum)	6	6	2	0	0
4	Rate the coverage of Programme / course outcome with the curriculum (Related to Curriculum)	7	4	2	1	0
5	Rate the allocation of the credits and contact hours (L-T-P) to the courses (Related to Curriculum)	6	6	2	0	0
6	Rate the offering of the electives in terms of their relevance to the specialization streams and technological advancements (Related to Curriculum)	6	6	2	0	0
7	Rate the courses in terms of extra learning or self-learning considering the design of the courses. (Related to Curriculum)	7	5	2	0	0
8	Rate the professional development, faculty development and administrative training programs conducted by the institution (Related to Curriculum)	6	5	3	0	0



## PRINCE SHRI VENKATESWARA ARTS AND SCIENCE COLLEGE

Gowrivakkam, Chennai-600073.

Affiliated to University of Madras, ISO 9001:2015 Certified Institution

9	Rate the composition of the courses in terms of Language papers, Core Papers, Allied Papers, Elective Papers, Soft Skills, Non-major Electives, Value Education, Project etc. (Related to Curriculum)	6	6	2	0	0
10	Rate the availability of text books, reference books, Digital Resources and Reading Material Support facilities in library and research environment (Related to infrastructure facilities & ambience of the institution)	6	5	3	0	0
11	Rate the infrastructure available in the college/ department and its usage efficiently (Related to infrastructure facilities & ambience of the institution)	7	5	2	0	0
12	Rate the classroom, lab, IT and other facilities (Related to infrastructure facilities & ambience of the institution)	7	4	3	0	0
13	Rate the maintenance of classrooms, laboratory, sports facilities, faculty cabin, toilets, rest rooms etc. (Related to infrastructure facilities & ambience of the institution)	7	5	2	0	0
14	Rate the encouragement by the institution for performing research, startup and entrepreneurial activities by the faculty (Related to ambience of the institution)	7	4	2	1	0
15	Rate the opportunity extended and financial aid to participate in Faculty development, Conferences, Workshops and etc., (Related to ambience of the institution)	6	6	2	0	0
16	Rate the working environment such as the relationship with co-workers and superiors, organizational culture etc. (Related to ambience of the institution)	7	5	2	0	0
17	Rate the faculty welfare measures taken by the institution (Related to ambience of the institution)	6	6	2	0	0
18	Rate the recognition/ appraisal system / Incentive/ Appreciation of the individual work by the institution (Related to ambience of the institution)	6	6	2	0	0
19	Rate the encouragement for taking-up consultancy works (Related to ambience of the institution)	6	5	3	0	0
20	Rate the uniform work distribution and work load for all the faculty in the department (Related to ambience of the institution)	6	6	2	0	0



*B. Kalpana*  
**PRINCIPAL**  
PRINCE SHRI VENKATESHWARA  
ARTS AND SCIENCE COLLEGE  
GOWRIVAKKAM, CHENNAI-600 073.



**PRINCE SHRI VENKATESWARA ARTS AND SCIENCE COLLEGE**

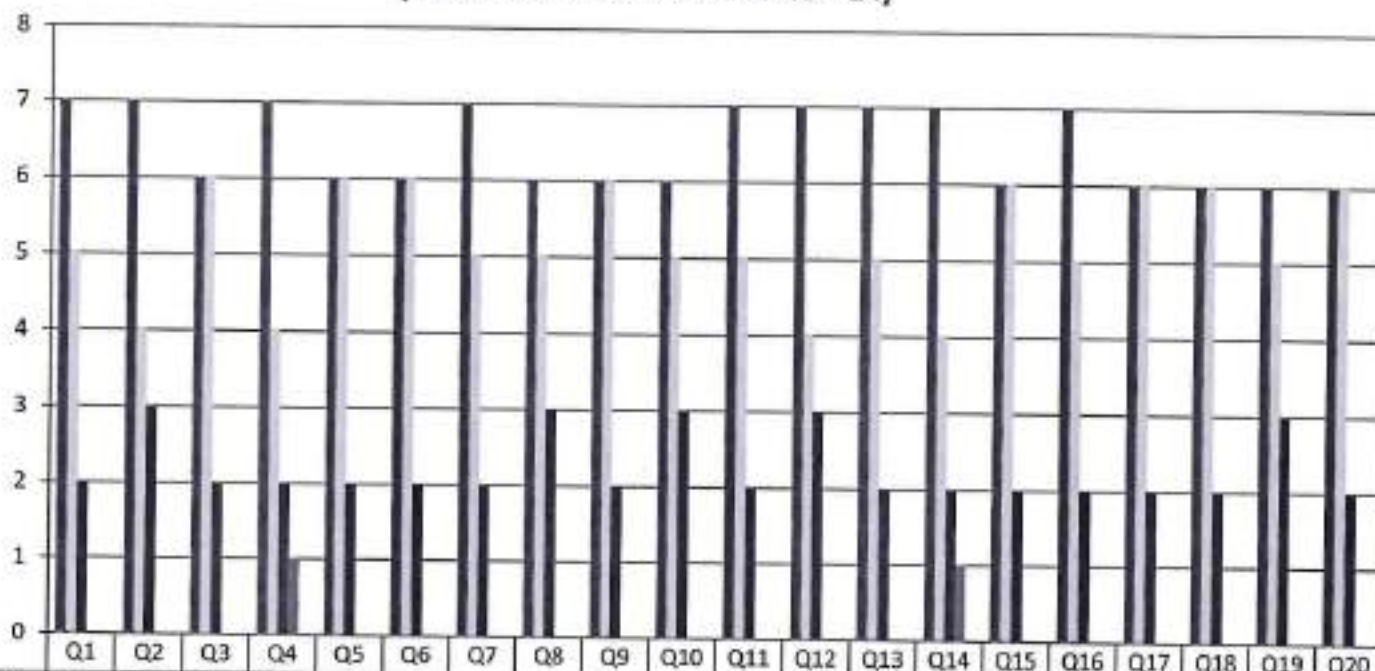
Gowrivakkam, Chennai-600073.

Affiliated to University of Madras, ISO 9001:2015 Certified Institution.

**FACULTY FEEDBACK ON CURRICULUM, INFRASTRUCTURE  
FACILITIES & AMBIENCE OF THE INSTITUTION - 2020-2021**

**B.COM (GENERAL)**

(NUMBER OF RESPONDENTS - 14)



*B. Kalpana*  
**PRINCIPAL**

**PRINCE SHRI VENKATESWARA  
ARTS AND SCIENCE COLLEGE**



## PRINCE SHRI VENKATESWARA ARTS AND SCIENCE COLLEGE

Gowrivaldkam, Chennai-600073.

Affiliated to University of Madras, ISO 9001:2015 Certified Institution

### FACULTY FEEDBACK ON CURRICULUM, INFRASTRUCTURE FACILITIES & AMBIENCE OF THE INSTITUTION – ANALYSIS REPORT

Academic Year 2020-21

Department BCA

Number of Respondents 7

Feedback Rate: Strongly Agree (5), Agree (4), Neutral (3), Disagree (2), Strongly Disagree (1)

S. No	Feedback on Curriculum, infrastructure facilities & ambience of the institution	5	4	3	2	1
1	Rate the sequence of the courses provided in the curriculum (Related to Curriculum)	5	1	1	0	0
2	Rate the syllabus of the courses in relation to the competencies expected out of the course (Related to Curriculum)	4	2	1	0	0
3	Rate the Curriculum facilitation for adoption of new techniques/education tools / strategies in teaching. (Related to Curriculum)	4	1	2	0	0
4	Rate the coverage of Programme / course outcome with the curriculum (Related to Curriculum)	3	2	1	1	0
5	Rate the allocation of the credits and contact hours (L-T-P) to the courses (Related to Curriculum)	3	2	2	0	0
6	Rate the offering of the electives in terms of their relevance to the specialization streams and technological advancements (Related to Curriculum)	2	4	1	0	0
7	Rate the courses in terms of extra learning or self-learning considering the design of the courses. (Related to Curriculum)	3	3	1	0	0
8	Rate the professional development, faculty development and administrative training programs conducted by the institution (Related to Curriculum)	4	0	3	0	0





## PRINCE SHRI VENKATESWARA ARTS AND SCIENCE COLLEGE

Gowrivakkam, Chennai-600073.

Affiliated to University of Madras, ISO 9001:2015 Certified Institution

9	Rate the composition of the courses in terms of Language papers, Core Papers, Allied Papers, Elective Papers, Soft Skills, Non-major Electives, Value Education, Project etc. (Related to Curriculum)	3	4	0	0	0
10	Rate the availability of text books, reference books, Digital Resources and Reading Material Support facilities in library and research environment (Related to infrastructure facilities & ambience of the institution)	4	3	0	0	0
11	Rate the infrastructure available in the college/ department and its usage efficiently (Related to infrastructure facilities & ambience of the institution)	2	3	2	0	0
12	Rate the classroom, lab, IT and other facilities (Related to infrastructure facilities & ambience of the institution)	3	2	2	0	0
13	Rate the maintenance of classrooms, laboratory, sports facilities, faculty cabin, toilets, rest rooms etc. (Related to infrastructure facilities & ambience of the institution)	3	3	1	0	0
14	Rate the encouragement by the institution for performing research, startup and entrepreneurial activities by the faculty (Related to ambience of the institution)	2	3	1	1	0
15	Rate the opportunity extended and financial aid to participate in Faculty development, Conferences, Workshops and etc., (Related to ambience of the institution)	4	2	1	0	0
16	Rate the working environment such as the relationship with co-workers and superiors, organizational culture etc. (Related to ambience of the institution)	3	3	1	0	0
17	Rate the faculty welfare measures taken by the institution (Related to ambience of the institution)	2	4	1	0	0
18	Rate the recognition/ appraisal system / Incentive/ Appreciation of the individual work by the institution (Related to ambience of the institution)	4	2	1	0	0
19	Rate the encouragement for taking-up consultancy works (Related to ambience of the institution)	4	1	2	0	0
20	Rate the uniform work distribution and work load for all the faculty in the department (Related to ambience of the institution)	4	0	3	0	0



*B. Kalpana*  
**PRINCIPAL**  
PRINCE SHRI VENKATESHWARA  
ARTS AND SCIENCE COLLEGE  
GOWRIVAKKAM, CHENNAI-600 073.



**PRINCE SHRI VENKATESWARA ARTS AND SCIENCE COLLEGE**

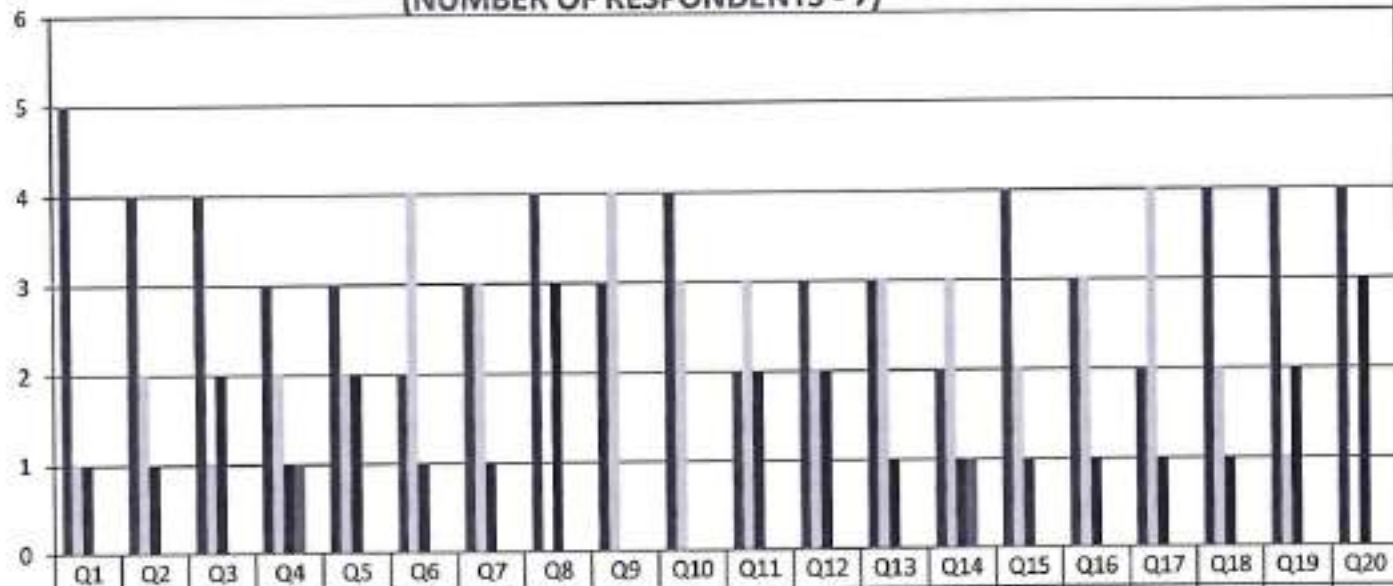
Gowrivakkam, Chennai-600073.

Affiliated to University of Madras, ISO 9001:2015 Certified Institution

**FACULTY FEEDBACK ON CURRICULUM, INFRASTRUCTURE FACILITIES & AMBIENCE OF THE INSTITUTION - 2020-2021**

**BCA**

(NUMBER OF RESPONDENTS - 7)



Strongly Agree (5)	5	4	4	3	3	2	3	4	3	4	2	3	3	2	4	3	2	4	4	4
Agree (4)	1	2	1	2	2	4	3	0	4	3	3	2	3	3	2	3	4	2	1	0
Neutral (3)	1	1	2	1	2	1	1	3	0	0	2	2	1	1	1	1	1	1	2	3
Disagree (2)	0	0	0	1	0	0	0	0	0	0	0	0	0	1	0	0	0	0	0	0
Strongly Disagree (1)	0	0	0	0	0	0	0	0	0	0	0	0	0	0	0	0	0	0	0	0



*B. Kalpana*  
**PRINCIPAL**  
 PRINCE SHRI VENKATESHWARA  
 ARTS AND SCIENCE COLLEGE  
 GOWRIVAKKAM, CHENNAI-600073



**PRINCE SHRI VENKATESWARA ARTS AND SCIENCE COLLEGE**

Gowrivaikam, Chennai-600073.

Affiliated to University of Madras, ISO 9001:2015 Certified Institution

**FACULTY FEEDBACK ON CURRICULUM, INFRASTRUCTURE FACILITIES & AMBIENCE OF THE INSTITUTION – ANALYSIS REPORT**

Academic Year 2020-21  
 Department B.Sc.-Biotechnology  
 Number of Respondents 5

Feedback Rate: Strongly Agree (5), Agree (4), Neutral (3), Disagree (2), Strongly Disagree (1)

S. No	Feedback on Curriculum, infrastructure facilities & ambience of the institution	5	4	3	2	1
1	Rate the sequence of the courses provided in the curriculum (Related to Curriculum)	3	1	1	0	0
2	Rate the syllabus of the courses in relation to the competencies expected out of the course (Related to Curriculum)	3	1	1	0	0
3	Rate the Curriculum facilitation for adoption of new techniques/education tools / strategies in teaching. (Related to Curriculum)	3	0	2	0	0
4	Rate the coverage of Programme / course outcome with the curriculum (Related to Curriculum)	3	0	1	1	0
5	Rate the allocation of the credits and contact hours (L-T-P) to the courses (Related to Curriculum)	1	2	2	0	0
6	Rate the offering of the electives in terms of their relevance to the specialization streams and technological advancements (Related to Curriculum)	1	3	1	0	0
7	Rate the courses in terms of extra learning or self-learning considering the design of the courses. (Related to Curriculum)	2	2	1	0	0
8	Rate the professional development, faculty development and administrative training programs conducted by the institution (Related to Curriculum)	1	1	3	0	0



## PRINCE SHRI VENKATESWARA ARTS AND SCIENCE COLLEGE

Gowrivakkam, Chennai-600073.

Affiliated to University of Madras, ISO 9001:2015 Certified Institution

9	Rate the composition of the courses in terms of Language papers, Core Papers, Allied Papers, Elective Papers, Soft Skills, Non-major Electives, Value Education, Project etc. (Related to Curriculum)	3	2	0	0	0
10	Rate the availability of text books, reference books, Digital Resources and Reading Material Support facilities in library and research environment (Related to infrastructure facilities & ambience of the institution)	2	3	0	0	0
11	Rate the infrastructure available in the college/ department and its usage efficiently (Related to infrastructure facilities & ambience of the institution)	1	3	1	0	0
12	Rate the classroom, lab, IT and other facilities (Related to infrastructure facilities & ambience of the institution)	3	1	1	0	0
13	Rate the maintenance of classrooms, laboratory, sports facilities, faculty cabin, toilets, rest rooms etc. (Related to infrastructure facilities & ambience of the institution)	2	2	1	0	0
14	Rate the encouragement by the institution for performing research, startup and entrepreneurial activities by the faculty (Related to ambience of the institution)	0	3	1	1	0
15	Rate the opportunity extended and financial aid to participate in Faculty development, Conferences, Workshops and etc., (Related to ambience of the institution)	2	2	1	0	0
16	Rate the working environment such as the relationship with co-workers and superiors, organizational culture etc. (Related to ambience of the institution)	1	3	1	0	0
17	Rate the faculty welfare measures taken by the institution (Related to ambience of the institution)	3	1	1	0	0
18	Rate the recognition/ appraisal system / Incentive/ Appreciation of the individual work by the institution (Related to ambience of the institution)	2	2	1	0	0
19	Rate the encouragement for taking-up consultancy works (Related to ambience of the institution)	1	2	2	0	0
20	Rate the uniform work distribution and work load for all the faculty in the department (Related to ambience of the institution)	2	0	3	0	0



*B. Kalpana*  
**PRINCIPAL**  
PRINCE SHRI VENKATESHWARA  
ARTS AND SCIENCE COLLEGE  
GOWRIVAKKAM, CHENNAI-600 073.



**PRINCE SHRI VENKATESWARA ARTS AND SCIENCE COLLEGE**

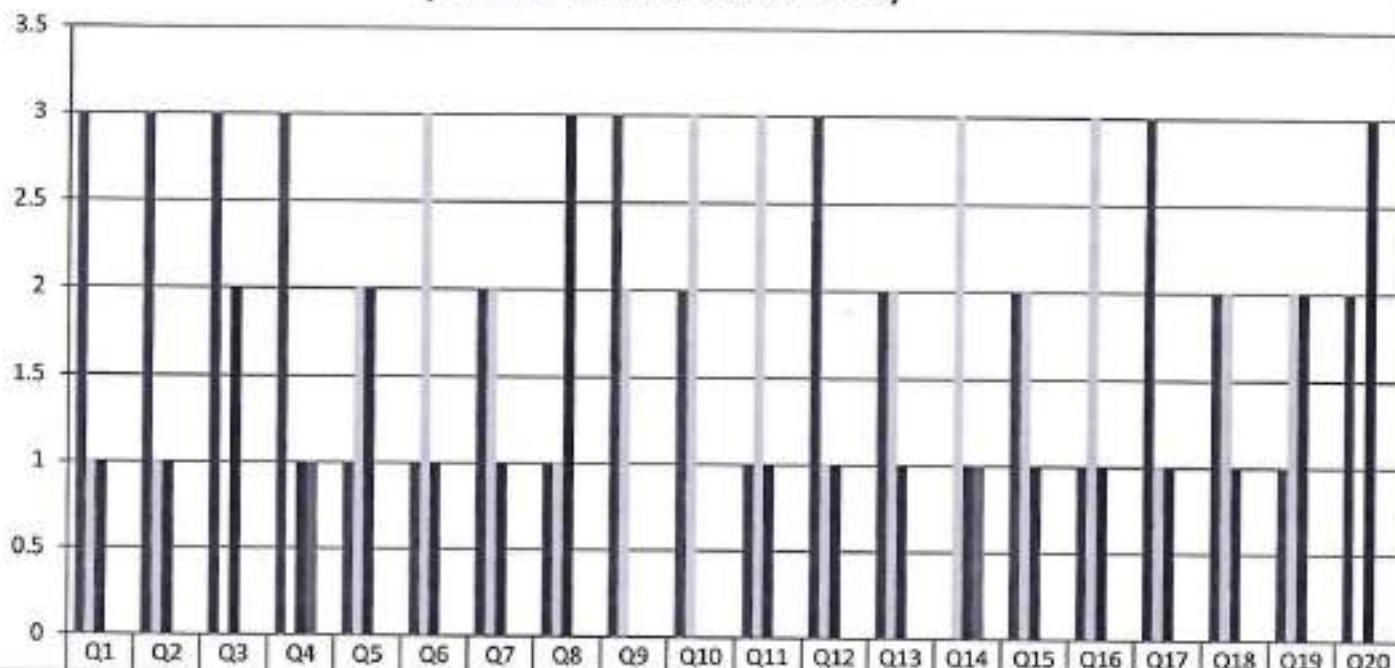
Gowrivakkam, Chennai-600073.

Affiliated to University of Madras, ISO 9001:2015 Certified Institution

**FACULTY FEEDBACK ON CURRICULUM, INFRASTRUCTURE  
FACILITIES & AMBIENCE OF THE INSTITUTION - 2020-2021**

**B.Sc. BIOTECHNOLOGY**

(NUMBER OF RESPONDENTS - 5)



	Q1	Q2	Q3	Q4	Q5	Q6	Q7	Q8	Q9	Q10	Q11	Q12	Q13	Q14	Q15	Q16	Q17	Q18	Q19	Q20
Strongly Agree (5)	3	3	3	3	1	1	2	1	3	2	1	3	2	0	2	1	3	2	1	2
Agree (4)	1	1	0	0	2	3	2	1	2	3	3	1	2	3	2	3	1	2	2	0
Neutral (3)	1	1	2	1	2	1	1	3	0	0	1	1	1	1	1	1	1	1	2	3
Disagree (2)	0	0	0	1	0	0	0	0	0	0	0	0	0	1	0	0	0	0	0	0
Strongly Disagree (1)	0	0	0	0	0	0	0	0	0	0	0	0	0	0	0	0	0	0	0	0



*B. Kalpana*  
**PRINCIPAL**

PRINCE SHRI VENKATESHWARA  
ARTS AND SCIENCE COLLEGE  
GOWRIVAKKAM, CHENNAI-600073



## PRINCE SHRI VENKATESWARA ARTS AND SCIENCE COLLEGE

Gowrivaldam, Chennai-600073.

Affiliated to University of Madras, ISO 9001:2015 Certified Institution

### FACULTY FEEDBACK ON CURRICULUM, INFRASTRUCTURE FACILITIES & AMBIENCE OF THE INSTITUTION – ANALYSIS REPORT

Academic Year	2020-21
Department	B. Com - Accounting and Finance
Number of Respondents	6

Feedback Rate: Strongly Agree (5), Agree (4), Neutral (3), Disagree (2), Strongly Disagree (1)

S. No	Feedback on Curriculum, infrastructure facilities & ambience of the institution	5	4	3	2	1
1	Rate the sequence of the courses provided in the curriculum (Related to Curriculum)	3	2	1	0	0
2	Rate the syllabus of the courses in relation to the competencies expected out of the course (Related to Curriculum)	3	2	1	0	0
3	Rate the Curriculum facilitation for adoption of new techniques/education tools / strategies in teaching. (Related to Curriculum)	3	1	2	0	0
4	Rate the coverage of Programme / course outcome with the curriculum (Related to Curriculum)	3	1	1	1	0
5	Rate the allocation of the credits and contact hours (L-T-P) to the courses (Related to Curriculum)	2	2	2	0	0
6	Rate the offering of the electives in terms of their relevance to the specialization streams and technological advancements (Related to Curriculum)	2	3	1	0	0
7	Rate the courses in terms of extra learning or self-learning considering the design of the courses. (Related to Curriculum)	2	3	1	0	0
8	Rate the professional development, faculty development and administrative training programs conducted by the institution (Related to Curriculum)	1	2	3	0	0



## PRINCE SHRI VENKATESWARA ARTS AND SCIENCE COLLEGE

Gowrivakkam, Chennai-600073.

Affiliated to University of Madras, ISO 9001:2015 Certified Institution

9	Rate the composition of the courses in terms of Language papers, Core Papers, Allied Papers, Elective Papers, Soft Skills, Non-major Electives, Value Education, Project etc. (Related to Curriculum)	3	2	1	0	0
10	Rate the availability of text books, reference books, Digital Resources and Reading Material Support facilities in library and research environment (Related to infrastructure facilities & ambience of the institution)	2	4	0	0	0
11	Rate the infrastructure available in the college/ department and its usage efficiently (Related to infrastructure facilities & ambience of the institution)	1	4	1	0	0
12	Rate the classroom, lab, IT and other facilities (Related to infrastructure facilities & ambience of the institution)	4	1	1	0	0
13	Rate the maintenance of classrooms, laboratory, sports facilities, faculty cabin, toilets, rest rooms etc. (Related to infrastructure facilities & ambience of the institution)	2	3	1	0	0
14	Rate the encouragement by the institution for performing research, startup and entrepreneurial activities by the faculty (Related to ambience of the institution)	1	3	1	1	0
15	Rate the opportunity extended and financial aid to participate in Faculty development, Conferences, Workshops and etc., (Related to ambience of the institution)	2	3	1	0	0
16	Rate the working environment such as the relationship with co-workers and superiors, organizational culture etc. (Related to ambience of the institution)	2	3	1	0	0
17	Rate the faculty welfare measures taken by the institution (Related to ambience of the institution)	3	2	1	0	0
18	Rate the recognition/ appraisal system / Incentive/ Appreciation of the individual work by the institution (Related to ambience of the institution)	2	3	1	0	0
19	Rate the encouragement for taking-up consultancy works (Related to ambience of the institution)	1	3	2	0	0
20	Rate the uniform work distribution and work load for all the faculty in the department (Related to ambience of the institution)	2	1	3	0	0



B. Kalpana  
PRINCIPAL

PRINCE SHRI VENKATESWARA  
ARTS AND SCIENCE COLLEGE  
GOWRIVAKKAM CHENNAI-600 073

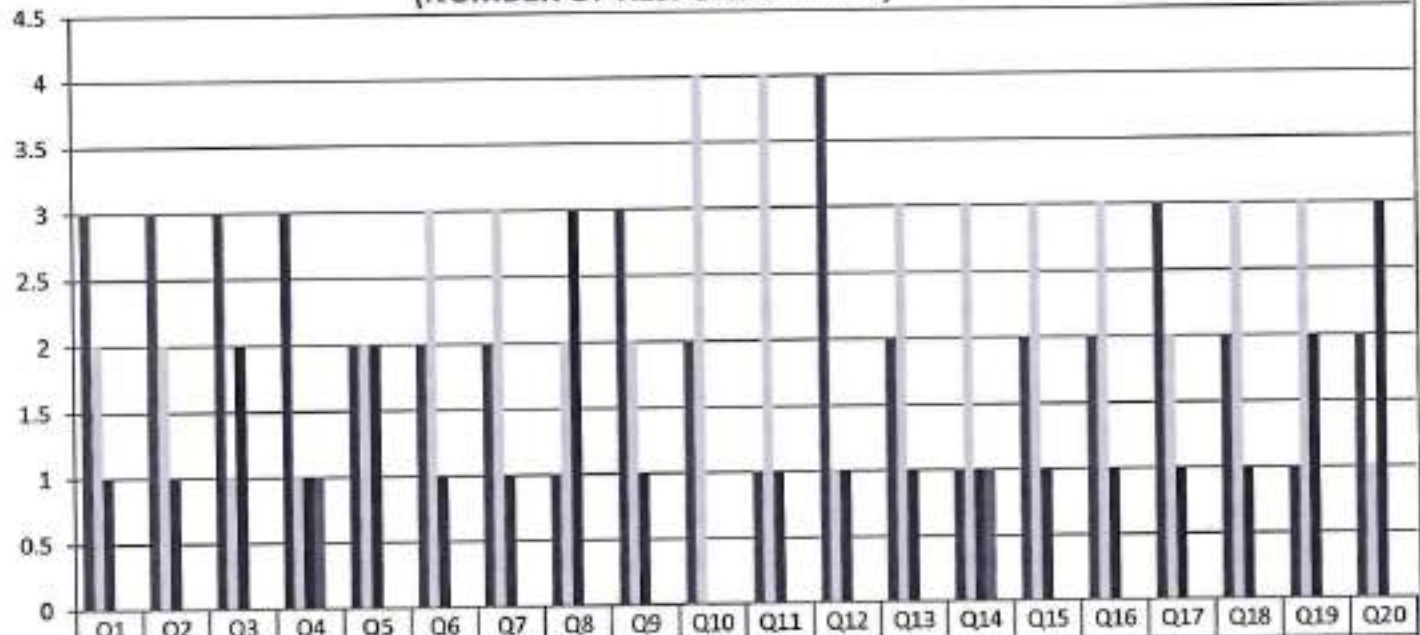


**PRINCE SHRI VENKATESWARA ARTS AND SCIENCE COLLEGE**

Gowrivaikam, Chennai-600073.

Affiliated to University of Madras, ISO 9001:2015 Certified Institution

**FACULTY FEEDBACK ON CURRICULUM, INFRASTRUCTURE  
FACILITIES & AMBIENCE OF THE INSTITUTION - 2020-2021  
B.COM (ACCOUNTING AND FINANCE)  
(NUMBER OF RESPONDENTS - 6)**



Strongly Agree (5)	3	3	3	3	2	2	2	1	3	2	1	4	2	1	2	2	3	2	1	2
Agree (4)	2	2	1	1	2	3	3	2	2	4	4	1	3	3	3	3	2	3	3	1
Neutral (3)	1	1	2	1	2	1	1	3	1	0	1	1	1	1	1	1	1	1	2	3
Disagree (2)	0	0	0	1	0	0	0	0	0	0	0	0	0	1	0	0	0	0	0	0
Strongly Disagree (1)	0	0	0	0	0	0	0	0	0	0	0	0	0	0	0	0	0	0	0	0



*B. Kalpana*  
**PRINCIPAL**  
PRINCE SHRI VENKATESHWARA  
ARTS AND SCIENCE COLLEGE  
GOWRIVAKKAM CHENNAI-600 073.





**PRINCE SHRI VENKATESWARA ARTS AND SCIENCE COLLEGE**

Gowrivakkam, Chennai-600073.

Affiliated to University of Madras, ISO 9001:2015 Certified Institution

**FACULTY FEEDBACK ON CURRICULUM, INFRASTRUCTURE FACILITIES & AMBIENCE OF THE INSTITUTION – ANALYSIS REPORT**

**Academic Year** 2020-21  
**Department** B.A. English  
**Number of Respondents** 3

Feedback Rate: Strongly Agree (5), Agree (4), Neutral (3), Disagree (2), Strongly Disagree (1)

S. No	Feedback on Curriculum, infrastructure facilities & ambience of the institution	5	4	3	2	1
1	Rate the sequence of the courses provided in the curriculum (Related to Curriculum)	2	0	1	0	0
2	Rate the syllabus of the courses in relation to the competencies expected out of the course (Related to Curriculum)	0	2	1	0	0
3	Rate the Curriculum facilitation for adoption of new techniques/education tools / strategies in teaching. (Related to Curriculum)	1	1	1	0	0
4	Rate the coverage of Programme / course outcome with the curriculum (Related to Curriculum)	2	1	0	0	0
5	Rate the allocation of the credits and contact hours (L-T-P) to the courses (Related to Curriculum)	1	0	2	0	0
6	Rate the offering of the electives in terms of their relevance to the specialization streams and technological advancements (Related to Curriculum)	2	0	1	0	0
7	Rate the courses in terms of extra learning or self-learning considering the design of the courses. (Related to Curriculum)	2	0	1	0	0
8	Rate the professional development, faculty development and administrative training programs conducted by the institution (Related to Curriculum)	1	2	0	0	0



## PRINCE SHRI VENKATESWARA ARTS AND SCIENCE COLLEGE

Gowrivakkam, Chennai-600073.

Affiliated to University of Madras, ISO 9001:2015 Certified Institution

9	Rate the composition of the courses in terms of Language papers, Core Papers, Allied Papers, Elective Papers, Soft Skills, Non-major Electives, Value Education, Project etc. (Related to Curriculum)	1	1	1	0	0
10	Rate the availability of text books, reference books, Digital Resources and Reading Material Support facilities in library and research environment (Related to infrastructure facilities & ambience of the institution)	2	1	0	0	0
11	Rate the infrastructure available in the college/ department and its usage efficiently (Related to infrastructure facilities & ambience of the institution)	1	1	1	0	0
12	Rate the classroom, lab, IT and other facilities (Related to infrastructure facilities & ambience of the institution)	2	0	1	0	0
13	Rate the maintenance of classrooms, laboratory, sports facilities, faculty cabin, toilets, rest rooms etc. (Related to infrastructure facilities & ambience of the institution)	2	0	1	0	0
14	Rate the encouragement by the institution for performing research, startup and entrepreneurial activities by the faculty (Related to ambience of the institution)	1	0	1	1	0
15	Rate the opportunity extended and financial aid to participate in Faculty development, Conferences, Workshops and etc., (Related to ambience of the institution)	3	0	0	0	0
16	Rate the working environment such as the relationship with co-workers and superiors, organizational culture etc. (Related to ambience of the institution)	2	0	1	0	0
17	Rate the faculty welfare measures taken by the institution (Related to ambience of the institution)	0	2	1	0	0
18	Rate the recognition/ appraisal system / Incentive/ Appreciation of the individual work by the institution (Related to ambience of the institution)	2	0	1	0	0
19	Rate the encouragement for taking-up consultancy works (Related to ambience of the institution)	1	0	2	0	0
20	Rate the uniform work distribution and work load for all the faculty in the department (Related to ambience of the institution)	2	1	0	0	0



*B. Kalpane*  
**PRINCIPAL**  
PRINCE SHRI VENKATESHWARA  
ARTS AND SCIENCE COLLEGE  
GOWRIVAKKAM, CHENNAI-600 073



**PRINCE SHRI VENKATESWARA ARTS AND SCIENCE COLLEGE**

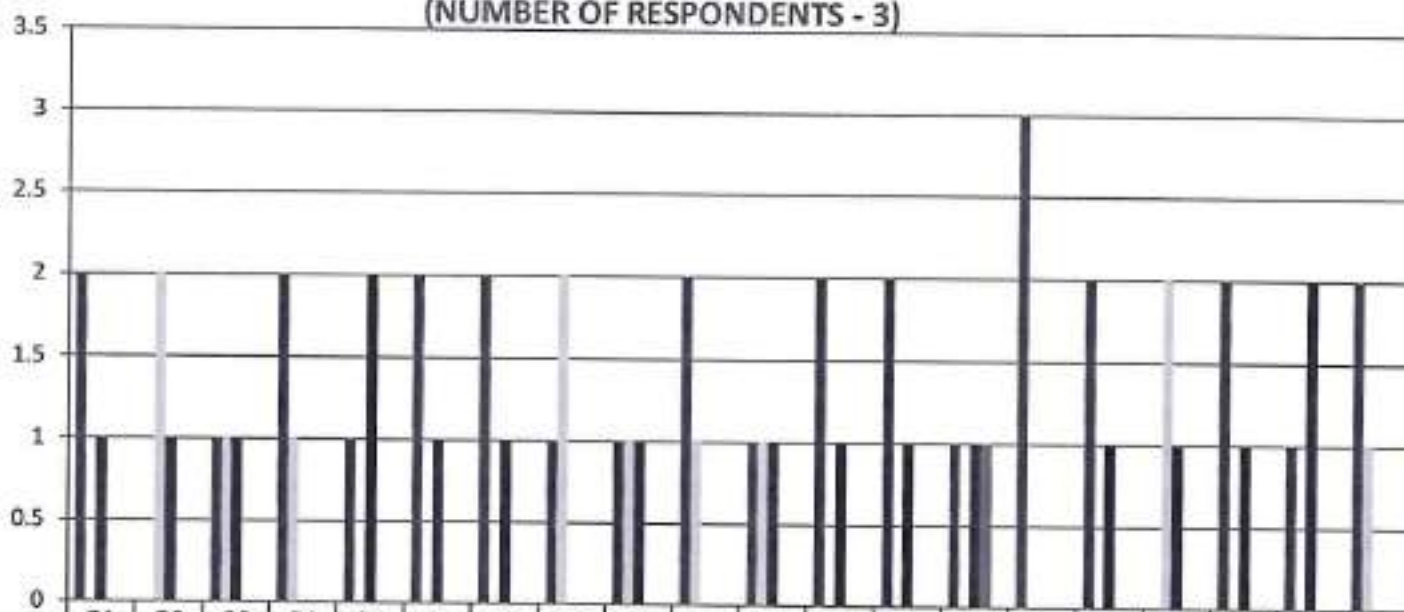
Gowrivakkam, Chennai-600073.

Affiliated to University of Madras, ISO 9001:2015 Certified Institution

**FACULTY FEEDBACK ON CURRICULUM, INFRASTRUCTURE  
FACILITIES & AMBIENCE OF THE INSTITUTION - 2020-2021**

**B.A. ENGLISH**

(NUMBER OF RESPONDENTS - 3)



	Q1	Q2	Q3	Q4	Q5	Q6	Q7	Q8	Q9	Q10	Q11	Q12	Q13	Q14	Q15	Q16	Q17	Q18	Q19	Q20
Strongly Agree (5)	2	0	1	2	1	2	2	1	1	2	1	2	2	1	3	2	0	2	1	2
Agree (4)	0	2	1	1	0	0	0	2	1	1	1	0	0	0	0	0	2	0	0	1
Neutral (3)	1	1	1	0	2	1	1	0	1	0	1	1	1	1	0	1	1	1	2	0
Disagree (2)	0	0	0	0	0	0	0	0	0	0	0	0	0	1	0	0	0	0	0	0
Strongly Disagree (1)	0	0	0	0	0	0	0	0	0	0	0	0	0	0	0	0	0	0	0	0



*B. Kalpana*  
**PRINCIPAL**  
PRINCE SHRI VENKATESHWARA  
ARTS AND SCIENCE COLLEGE  
GOWRIVAKKAM, CHENNAI-600 073.



## PRINCE SHRI VENKATESWARA ARTS AND SCIENCE COLLEGE

Gowrivaikam, Chennai-600073.

Affiliated to University of Madras, ISO 9001:2015 Certified Institution

### FACULTY FEEDBACK ON CURRICULUM, INFRASTRUCTURE FACILITIES & AMBIENCE OF THE INSTITUTION – ANALYSIS REPORT

Academic Year 2020-21

Department BBA

Number of Respondents 4

Feedback Rate: Strongly Agree (5), Agree (4), Neutral (3), Disagree (2), Strongly Disagree (1)

S. No	Feedback on Curriculum, infrastructure facilities & ambience of the institution	5	4	3	2	1
1	Rate the sequence of the courses provided in the curriculum (Related to Curriculum)	3	0	1	0	0
2	Rate the syllabus of the courses in relation to the competencies expected out of the course (Related to Curriculum)	2	1	1	0	0
3	Rate the Curriculum facilitation for adoption of new techniques/education tools / strategies in teaching. (Related to Curriculum)	2	0	2	0	0
4	Rate the coverage of Programme / course outcome with the curriculum (Related to Curriculum)	1	1	1	1	0
5	Rate the allocation of the credits and contact hours (L-T-P) to the courses (Related to Curriculum)	1	1	2	0	0
6	Rate the offering of the electives in terms of their relevance to the specialization streams and technological advancements (Related to Curriculum)	0	3	1	0	0
7	Rate the courses in terms of extra learning or self-learning considering the design of the courses. (Related to Curriculum)	1	2	1	0	0
8	Rate the professional development, faculty development and administrative training programs conducted by the institution (Related to Curriculum)	2	0	2	0	0



## PRINCE SHRI VENKATESWARA ARTS AND SCIENCE COLLEGE

Gowrivakkam, Chennai-600073.

Affiliated to University of Madras, ISO 9001:2015 Certified Institution

9	Rate the composition of the courses in terms of Language papers, Core Papers, Allied Papers, Elective Papers, Soft Skills, Non-major Electives, Value Education, Project etc. (Related to Curriculum)	1	3	0	0	0
10	Rate the availability of text books, reference books, Digital Resources and Reading Material Support facilities in library and research environment (Related to infrastructure facilities & ambience of the institution)	2	2	0	0	0
11	Rate the infrastructure available in the college/ department and its usage efficiently (Related to infrastructure facilities & ambience of the institution)	0	2	2	0	0
12	Rate the classroom, lab, IT and other facilities (Related to infrastructure facilities & ambience of the institution)	1	1	2	0	0
13	Rate the maintenance of classrooms, laboratory, sports facilities, faculty cabin, toilets, rest rooms etc. (Related to infrastructure facilities & ambience of the institution)	1	2	1	0	0
14	Rate the encouragement by the institution for performing research, startup and entrepreneurial activities by the faculty (Related to ambience of the institution)	0	2	1	1	0
15	Rate the opportunity extended and financial aid to participate in Faculty development, Conferences, Workshops and etc., (Related to ambience of the institution)	2	1	1	0	0
16	Rate the working environment such as the relationship with co-workers and superiors, organizational culture etc. (Related to ambience of the institution)	1	2	1	0	0
17	Rate the faculty welfare measures taken by the institution (Related to ambience of the institution)	0	3	1	0	0
18	Rate the recognition/ appraisal system / Incentive/ Appreciation of the individual work by the institution (Related to ambience of the institution)	2	1	1	0	0
19	Rate the encouragement for taking-up consultancy works (Related to ambience of the institution)	2	0	2	0	0
20	Rate the uniform work distribution and work load for all the faculty in the department (Related to ambience of the institution)	2	1	1	0	0



*B. Kalpana*  
**PRINCIPAL**  
PRINCE SHRI VENKATESHWARA  
ARTS AND SCIENCE COLLEGE  
GOWRIVAKKAM, CHENNAI-600 073



**PRINCE SHRI VENKATESWARA ARTS AND SCIENCE COLLEGE**

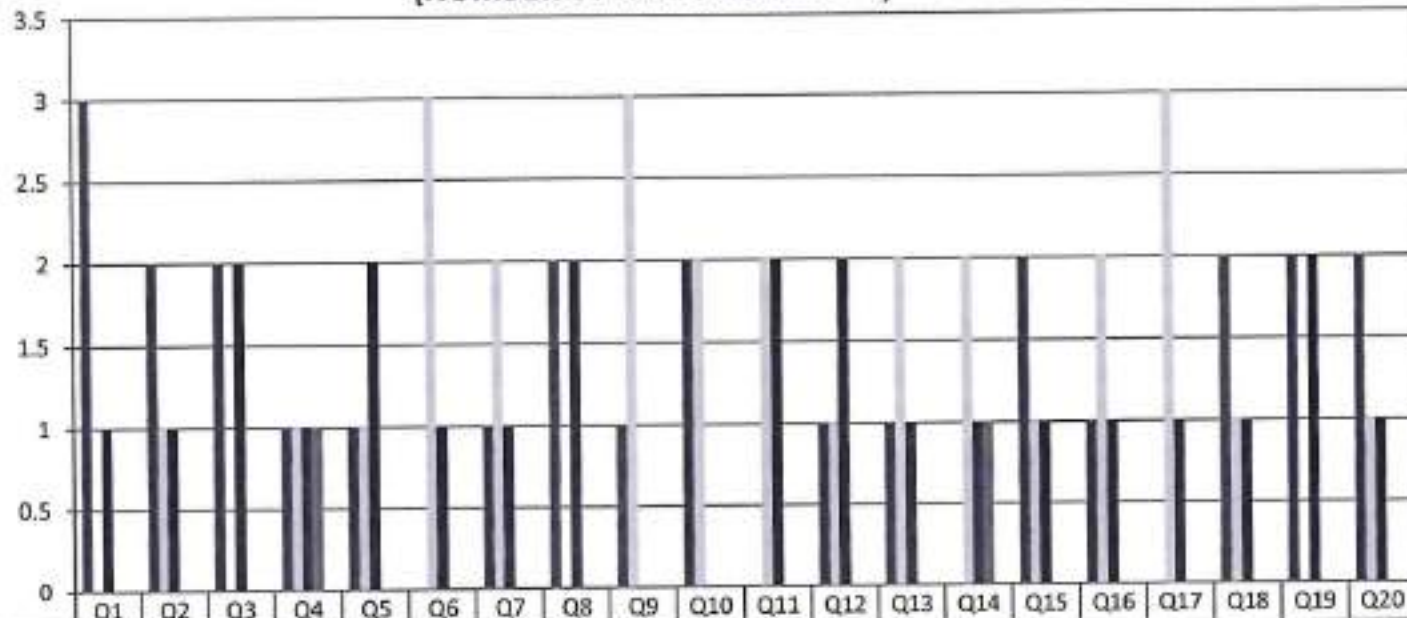
Gowrivakkam, Chennai-600073.

Affiliated to University of Madras, ISO 9001:2015 Certified Institution

**FACULTY FEEDBACK ON CURRICULUM, INFRASTRUCTURE  
FACILITIES & AMBIENCE OF THE INSTITUTION - 2020-2021**

**BBA**

(NUMBER OF RESPONDENTS - 4)



Strongly Agree (5)	3	2	2	1	1	0	1	2	1	2	0	1	1	0	2	1	0	2	2	2
Agree (4)	0	1	0	1	1	3	2	0	3	2	2	1	2	2	1	2	3	1	0	1
Neutral (3)	1	1	2	1	2	1	1	2	0	0	2	2	1	1	1	1	1	1	2	1
Disagree (2)	0	0	0	1	0	0	0	0	0	0	0	0	0	1	0	0	0	0	0	0
Strongly Disagree (1)	0	0	0	0	0	0	0	0	0	0	0	0	0	0	0	0	0	0	0	0



*B. Kalpana*  
**PRINCIPAL**  
 PRINCE SHRI VENKATESHWARA  
 ARTS AND SCIENCE COLLEGE  
 GOWRIVAKKAM, CHENNAI-600 073.



## PRINCE SHRI VENKATESWARA ARTS AND SCIENCE COLLEGE

Gowrivaikam, Chennai-600073.

Affiliated to University of Madras, ISO 9001:2015 Certified Institution

### FACULTY FEEDBACK ON CURRICULUM, INFRASTRUCTURE FACILITIES & AMBIENCE OF THE INSTITUTION – ANALYSIS REPORT

**Academic Year** 2020-21  
**Department** M.Sc. Microbiology  
**Number of Respondents** 2

Feedback Rate: Strongly Agree (5), Agree (4), Neutral (3), Disagree (2), Strongly Disagree (1)

S. No	Feedback on Curriculum, infrastructure facilities & ambience of the institution	5	4	3	2	1
1	Rate the sequence of the courses provided in the curriculum (Related to Curriculum)	0	2	0	0	0
2	Rate the syllabus of the courses in relation to the competencies expected out of the course (Related to Curriculum)	2	0	0	0	0
3	Rate the Curriculum facilitation for adoption of new techniques/education tools / strategies in teaching. (Related to Curriculum)	2	0	0	0	0
4	Rate the coverage of Programme / course outcome with the curriculum (Related to Curriculum)	0	2	0	0	0
5	Rate the allocation of the credits and contact hours (L-T-P) to the courses (Related to Curriculum)	2	0	0	0	0
6	Rate the offering of the electives in terms of their relevance to the specialization streams and technological advancements (Related to Curriculum)	0	2	0	0	0
7	Rate the courses in terms of extra learning or self-learning considering the design of the courses. (Related to Curriculum)	2	0	0	0	0
8	Rate the professional development, faculty development and administrative training programs conducted by the institution (Related to Curriculum)	1	1	0	0	0



## PRINCE SHRI VENKATESWARA ARTS AND SCIENCE COLLEGE

Gowrivakkam, Chennai-600073.

Affiliated to University of Madras, ISO 9001:2015 Certified Institution

9	Rate the composition of the courses in terms of Language papers, Core Papers, Allied Papers, Elective Papers, Soft Skills, Non-major Electives, Value Education, Project etc. (Related to Curriculum)	2	0	0	0	0
10	Rate the availability of text books, reference books, Digital Resources and Reading Material Support facilities in library and research environment (Related to infrastructure facilities & ambience of the institution)	0	2	0	0	0
11	Rate the infrastructure available in the college/ department and its usage efficiently (Related to infrastructure facilities & ambience of the institution)	1	1	0	0	0
12	Rate the classroom, lab, IT and other facilities (Related to infrastructure facilities & ambience of the institution)	0	2	0	0	0
13	Rate the maintenance of classrooms, laboratory, sports facilities, faculty cabin, toilets, rest rooms etc. (Related to infrastructure facilities & ambience of the institution)	2	0	0	0	0
14	Rate the encouragement by the institution for performing research, startup and entrepreneurial activities by the faculty (Related to ambience of the institution)	1	1	0	0	0
15	Rate the opportunity extended and financial aid to participate in Faculty development, Conferences, Workshops and etc., (Related to ambience of the institution)	1	1	0	0	0
16	Rate the working environment such as the relationship with co-workers and superiors, organizational culture etc. (Related to ambience of the institution)	2	0	0	0	0
17	Rate the faculty welfare measures taken by the institution (Related to ambience of the institution)	1	1	0	0	0
18	Rate the recognition/ appraisal system / Incentive/ Appreciation of the individual work by the institution (Related to ambience of the institution)	0	2	0	0	0
19	Rate the encouragement for taking-up consultancy works (Related to ambience of the institution)	2	0	0	0	0
20	Rate the uniform work distribution and work load for all the faculty in the department (Related to ambience of the institution)	1	1	0	0	0



*B. Kalpane*  
PRINCIPAL

PRINCE SHRI VENKATESHWARA  
ARTS AND SCIENCE COLLEGE  
GOWRIVAKKAM, CHENNAI-600 073.





# PRINCE SHRI VENKATESWARA ARTS AND SCIENCE COLLEGE

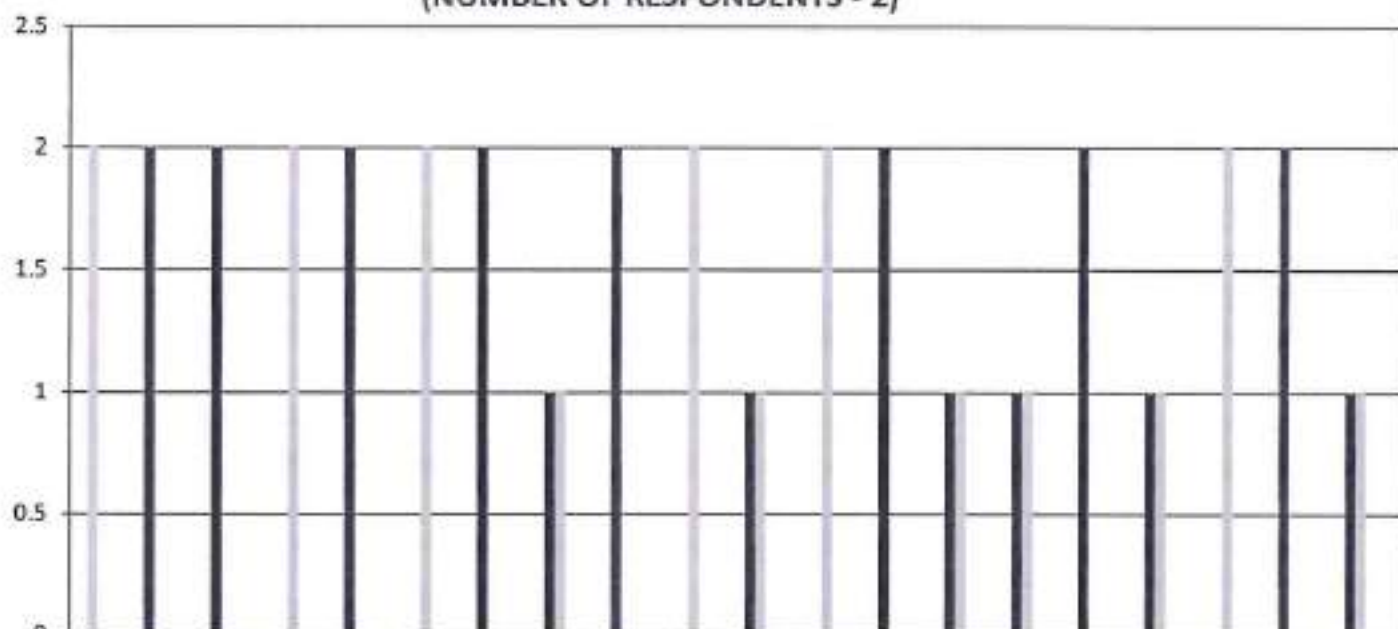
Gowrivakkam, Chennai-600073.

Affiliated to University of Madras, ISO 9001:2015 Certified Institution

## FACULTY FEEDBACK ON CURRICULUM, INFRASTRUCTURE FACILITIES & AMBIENCE OF THE INSTITUTION - 2020-2021

### M.Sc. MICROBIOLOGY

(NUMBER OF RESPONDENTS - 2)



	Q1	Q2	Q3	Q4	Q5	Q6	Q7	Q8	Q9	Q10	Q11	Q12	Q13	Q14	Q15	Q16	Q17	Q18	Q19	Q20
Strongly Agree (5)	0	2	2	0	2	0	2	1	2	0	1	0	2	1	1	2	1	0	2	1
Agree (4)	2	0	0	2	0	2	0	1	0	2	1	2	0	1	1	0	1	2	0	1
Neutral (3)	0	0	0	0	0	0	0	0	0	0	0	0	0	0	0	0	0	0	0	0
Disagree (2)	0	0	0	0	0	0	0	0	0	0	0	0	0	0	0	0	0	0	0	0
Strongly Disagree (1)	0	0	0	0	0	0	0	0	0	0	0	0	0	0	0	0	0	0	0	0



*P. Kalpana*  
**PRINCIPAL**  
 PRINCE SHRI VENKATESHWARA  
 ARTS AND SCIENCE COLLEGE  
 GOWRIVAKKAM, CHENNAI-600 073.



## PRINCE SHRI VENKATESWARA ARTS AND SCIENCE COLLEGE

Gowrivalakam, Chennai-600073

Affiliated to University of Madras, ISO 9001:2015 Certified Institution

### FACULTY FEEDBACK ON CURRICULUM, INFRASTRUCTURE FACILITIES & AMBIENCE OF THE INSTITUTION – ANALYSIS REPORT

**Academic Year** 2020-21  
**Department** M.Sc. Computer Science  
**Number of Respondents** 3

Feedback Rate: Strongly Agree (5), Agree (4), Neutral (3), Disagree (2), Strongly Disagree (1)

S. No	Feedback on Curriculum, infrastructure facilities & ambience of the institution	5	4	3	2	1
1	Rate the sequence of the courses provided in the curriculum (Related to Curriculum)	1	2	0	0	0
2	Rate the syllabus of the courses in relation to the competencies expected out of the course (Related to Curriculum)	3	0	0	0	0
3	Rate the Curriculum facilitation for adoption of new techniques/education tools / strategies in teaching. (Related to Curriculum)	3	0	0	0	0
4	Rate the coverage of Programme / course outcome with the curriculum (Related to Curriculum)	1	2	0	0	0
5	Rate the allocation of the credits and contact hours (L-T-P) to the courses (Related to Curriculum)	3	0	0	0	0
6	Rate the offering of the electives in terms of their relevance to the specialization streams and technological advancements (Related to Curriculum)	1	2	0	0	0
7	Rate the courses in terms of extra learning or self-learning considering the design of the courses. (Related to Curriculum)	3	0	0	0	0
8	Rate the professional development, faculty development and administrative training programs conducted by the institution (Related to Curriculum)	2	1	0	0	0



## PRINCE SHRI VENKATESWARA ARTS AND SCIENCE COLLEGE

Gowrivaikam, Chennai-600073.

Affiliated to University of Madras, ISO 9001:2015 Certified Institution

9	Rate the composition of the courses in terms of Language papers, Core Papers, Allied Papers, Elective Papers, Soft Skills, Non-major Electives, Value Education, Project etc. (Related to Curriculum)	3	0	0	0	0
10	Rate the availability of text books, reference books, Digital Resources and Reading Material Support facilities in library and research environment (Related to infrastructure facilities & ambience of the institution)	1	2	0	0	0
11	Rate the infrastructure available in the college/ department and its usage efficiently (Related to infrastructure facilities & ambience of the institution)	2	1	0	0	0
12	Rate the classroom, lab, IT and other facilities (Related to infrastructure facilities & ambience of the institution)	1	2	0	0	0
13	Rate the maintenance of classrooms, laboratory, sports facilities, faculty cabin, toilets, rest rooms etc. (Related to infrastructure facilities & ambience of the institution)	3	0	0	0	0
14	Rate the encouragement by the institution for performing research, startup and entrepreneurial activities by the faculty (Related to ambience of the institution)	2	1	0	0	0
15	Rate the opportunity extended and financial aid to participate in Faculty development, Conferences, Workshops and etc., (Related to ambience of the institution)	2	1	0	0	0
16	Rate the working environment such as the relationship with co-workers and superiors, organizational culture etc. (Related to ambience of the institution)	3	0	0	0	0
17	Rate the faculty welfare measures taken by the institution (Related to ambience of the institution)	2	1	0	0	0
18	Rate the recognition/ appraisal system / Incentive/ Appreciation of the individual work by the institution (Related to ambience of the institution)	1	2	0	0	0
19	Rate the encouragement for taking-up consultancy works (Related to ambience of the institution)	3	0	0	0	0
20	Rate the uniform work distribution and work load for all the faculty in the department (Related to ambience of the institution)	2	1	0	0	0



*B. Kalpana*  
**PRINCIPAL**  
PRINCE SHRI VENKATESHWARA  
ARTS AND SCIENCE COLLEGE  
GOWRIVAKKAM, CHENNAI-600 073



# PRINCE SHRI VENKATESWARA ARTS AND SCIENCE COLLEGE

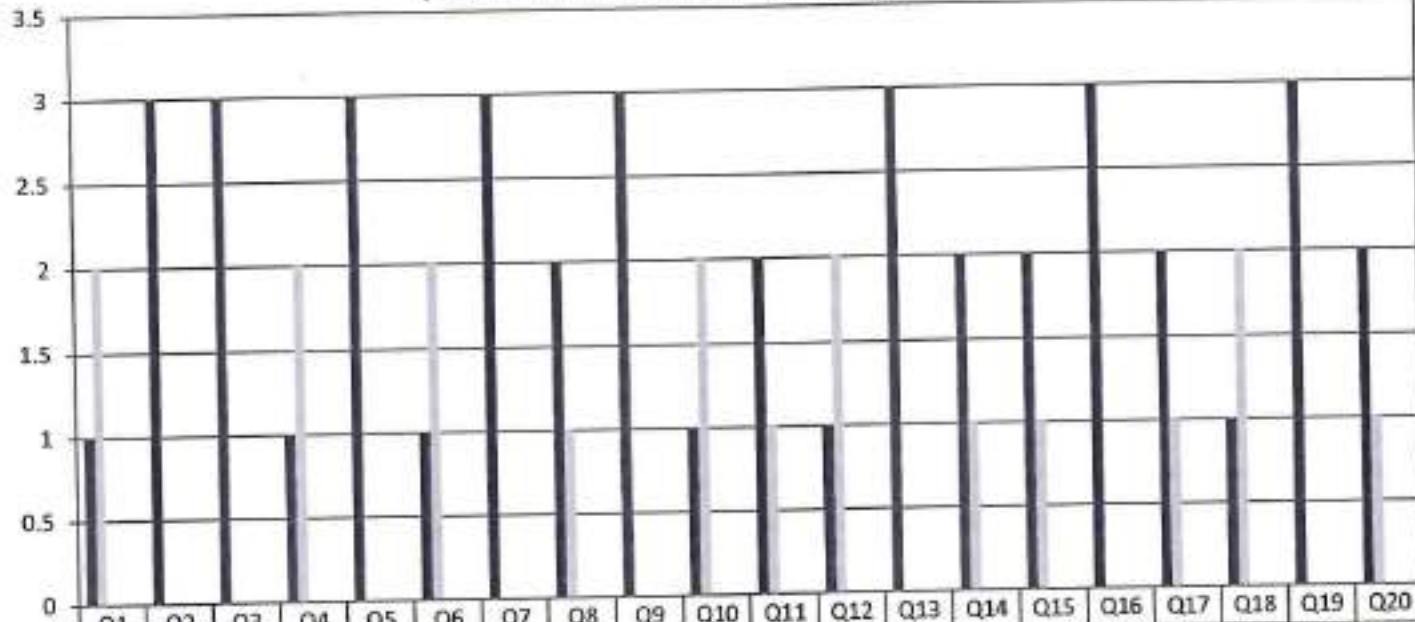
Gowrivakkam, Chennai-600073.

Affiliated to University of Madras, ISO 9001:2015 Certified Institution

## FACULTY FEEDBACK ON CURRICULUM, INFRASTRUCTURE FACILITIES & AMBIENCE OF THE INSTITUTION - 2020-2021

### M.Sc. COMPUTER SCIENCE

(NUMBER OF RESPONDENTS - 3)



Strongly Agree (5)	1	3	3	1	3	1	3	2	3	1	2	1	3	2	2	3	2	1	3	2
Agree (4)	2	0	0	2	0	2	0	1	0	2	1	2	0	1	1	0	1	2	0	1
Neutral (3)	0	0	0	0	0	0	0	0	0	0	0	0	0	0	0	0	0	0	0	0
Disagree (2)	0	0	0	0	0	0	0	0	0	0	0	0	0	0	0	0	0	0	0	0
Strongly Disagree (1)	0	0	0	0	0	0	0	0	0	0	0	0	0	0	0	0	0	0	0	0



*B. Kalpana*  
**PRINCIPAL**  
 PRINCE SHRI VENKATESHWARA  
 ARTS AND SCIENCE COLLEGE  
 GOWRIVAKKAM, CHENNAI-600 073.



**PRINCE SHRI VENKATESWARA ARTS AND SCIENCE COLLEGE**

Gowrivakkam, Chennai-600073.

Affiliated to University of Madras, ISO 9001:2015 Certified Institution

**FACULTY FEEDBACK ON CURRICULUM, INFRASTRUCTURE FACILITIES & AMBIENCE OF THE INSTITUTION – ANALYSIS REPORT**

**Academic Year** 2020-21  
**Department** M.Sc. Biochemistry  
**Number of Respondents** 2

Feedback Rate: Strongly Agree (5), Agree (4), Neutral (3), Disagree (2), Strongly Disagree (1)

S. No	Feedback on Curriculum, infrastructure facilities & ambience of the institution	5	4	3	2	1
1	Rate the sequence of the courses provided in the curriculum (Related to Curriculum)	1	0	1	0	0
2	Rate the syllabus of the courses in relation to the competencies expected out of the course (Related to Curriculum)	0	1	1	0	0
3	Rate the Curriculum facilitation for adoption of new techniques/education tools / strategies in teaching. (Related to Curriculum)	1	0	1	0	0
4	Rate the coverage of Programme / course outcome with the curriculum (Related to Curriculum)	2	0	0	0	0
5	Rate the allocation of the credits and contact hours (L-T-P) to the courses (Related to Curriculum)	0	0	2	0	0
6	Rate the offering of the electives in terms of their relevance to the specialization streams and technological advancements (Related to Curriculum)	1	0	1	0	0
7	Rate the courses in terms of extra learning or self-learning considering the design of the courses. (Related to Curriculum)	2	0	0	0	0
8	Rate the professional development, faculty development and administrative training programs conducted by the institution (Related to Curriculum)	0	2	0	0	0



## PRINCE SHRI VENKATESWARA ARTS AND SCIENCE COLLEGE

Gowrivaikam, Chennai-600073.

Affiliated to University of Madras, ISO 9001:2015 Certified Institution

9	Rate the composition of the courses in terms of Language papers, Core Papers, Allied Papers, Elective Papers, Soft Skills, Non-major Electives, Value Education, Project etc. (Related to Curriculum)	1	0	1	0	0
10	Rate the availability of text books, reference books, Digital Resources and Reading Material Support facilities in library and research environment (Related to infrastructure facilities & ambience of the institution)	2	0	0	0	0
11	Rate the infrastructure available in the college/ department and its usage efficiently (Related to infrastructure facilities & ambience of the institution)	1	1	0	0	0
12	Rate the classroom, lab, IT and other facilities (Related to infrastructure facilities & ambience of the institution)	2	0	0	0	0
13	Rate the maintenance of classrooms, laboratory, sports facilities, faculty cabin, toilets, rest rooms etc. (Related to infrastructure facilities & ambience of the institution)	2	0	0	0	0
14	Rate the encouragement by the institution for performing research, startup and entrepreneurial activities by the faculty (Related to ambience of the institution)	1	1	0	0	0
15	Rate the opportunity extended and financial aid to participate in Faculty development, Conferences, Workshops and etc., (Related to ambience of the institution)	2	0	0	0	0
16	Rate the working environment such as the relationship with co-workers and superiors, organizational culture etc. (Related to ambience of the institution)	2	0	0	0	0
17	Rate the faculty welfare measures taken by the institution (Related to ambience of the institution)	0	2	0	0	0
18	Rate the recognition/ appraisal system / Incentive/ Appreciation of the individual work by the institution (Related to ambience of the institution)	2	0	0	0	0
19	Rate the encouragement for taking-up consultancy works (Related to ambience of the institution)	1	0	1	0	0
20	Rate the uniform work distribution and work load for all the faculty in the department (Related to ambience of the institution)	2	0	0	0	0



*B. Kalpane*  
**PRINCIPAL**  
PRINCE SHRI VENKATESHWARA  
ARTS AND SCIENCE COLLEGE  
GOWRIVAKKAM, CHENNAI-600 073.



**PRINCE SHRI VENKATESWARA ARTS AND SCIENCE COLLEGE**

Gowrivakkam, Chennai-600073.

Affiliated to University of Madras, ISO 9001:2015 Certified Institution

**FACULTY FEEDBACK ON CURRICULUM, INFRASTRUCTURE  
FACILITIES & AMBIENCE OF THE INSTITUTION - 2020-2021**

**M.Sc. BIOCHEMISTRY**

(NUMBER OF RESPONDENTS - 2)



	Q1	Q2	Q3	Q4	Q5	Q6	Q7	Q8	Q9	Q10	Q11	Q12	Q13	Q14	Q15	Q16	Q17	Q18	Q19	Q20
Strongly Agree (5)	1	0	1	2	0	1	2	0	1	2	1	2	2	1	2	2	0	2	1	2
Agree (4)	0	1	0	0	0	0	0	2	0	0	1	0	0	1	0	0	2	0	0	0
Neutral (3)	1	1	1	0	2	1	0	0	1	0	0	0	0	0	0	0	0	0	1	0
Disagree (2)	0	0	0	0	0	0	0	0	0	0	0	0	0	0	0	0	0	0	0	0
Strongly Disagree (1)	0	0	0	0	0	0	0	0	0	0	0	0	0	0	0	0	0	0	0	0



*B. Kalpana*  
**PRINCIPAL**

PRINCE SHRI VENKATESHWARA  
ARTS AND SCIENCE COLLEGE  
GOWRIVAKKAM, CHENNAI-600 073.



## PRINCE SHRI VENKATESWARA ARTS AND SCIENCE COLLEGE

Gowrivaldkam, Chennai-600073.

Affiliated to University of Madras, ISO 9001:2015 Certified Institution

### FACULTY FEEDBACK ON CURRICULUM, INFRASTRUCTURE FACILITIES & AMBIENCE OF THE INSTITUTION – ANALYSIS REPORT

**Academic Year** 2020-21  
**Department** M.Sc. Biotechnology  
**Number of Respondents** 2

Feedback Rate: Strongly Agree (5), Agree (4), Neutral (3), Disagree (2), Strongly Disagree (1)

S. No	Feedback on Curriculum, infrastructure facilities & ambience of the institution	5	4	3	2	1
1	Rate the sequence of the courses provided in the curriculum (Related to Curriculum)	1	1	0	0	0
2	Rate the syllabus of the courses in relation to the competencies expected out of the course (Related to Curriculum)	0	2	0	0	0
3	Rate the Curriculum facilitation for adoption of new techniques/education tools / strategies in teaching. (Related to Curriculum)	2	0	0	0	0
4	Rate the coverage of Programme / course outcome with the curriculum (Related to Curriculum)	2	0	0	0	0
5	Rate the allocation of the credits and contact hours (L-T-P) to the courses (Related to Curriculum)	0	2	0	0	0
6	Rate the offering of the electives in terms of their relevance to the specialization streams and technological advancements (Related to Curriculum)	1	1	0	0	0
7	Rate the courses in terms of extra learning or self-learning considering the design of the courses. (Related to Curriculum)	1	0	1	0	0
8	Rate the professional development, faculty development and administrative training programs conducted by the institution (Related to Curriculum)	1	1	0	0	0





## PRINCE SHRI VENKATESWARA ARTS AND SCIENCE COLLEGE

Gowrivakkam, Chennai-600073.

Affiliated to University of Madras, ISO 9001:2015 Certified Institution

9	Rate the composition of the courses in terms of Language papers, Core Papers, Allied Papers, Elective Papers, Soft Skills, Non-major Electives, Value Education, Project etc. (Related to Curriculum)	0	1	1	0	0
10	Rate the availability of text books, reference books, Digital Resources and Reading Material Support facilities in library and research environment (Related to infrastructure facilities & ambience of the institution)	0	2	0	0	0
11	Rate the infrastructure available in the college/ department and its usage efficiently (Related to infrastructure facilities & ambience of the institution)	1	1	0	0	0
12	Rate the classroom, lab, IT and other facilities (Related to infrastructure facilities & ambience of the institution)	1	1	0	0	0
13	Rate the maintenance of classrooms, laboratory, sports facilities, faculty cabin, toilets, rest rooms etc. (Related to infrastructure facilities & ambience of the institution)	0	2	0	0	0
14	Rate the encouragement by the institution for performing research, startup and entrepreneurial activities by the faculty (Related to ambience of the institution)	1	1	0	0	0
15	Rate the opportunity extended and financial aid to participate in Faculty development, Conferences, Workshops and etc., (Related to ambience of the institution)	1	1	0	0	0
16	Rate the working environment such as the relationship with co-workers and superiors, organizational culture etc. (Related to ambience of the institution)	1	1	0	0	0
17	Rate the faculty welfare measures taken by the institution (Related to ambience of the institution)	1	0	0	1	0
18	Rate the recognition/ appraisal system / Incentive/ Appreciation of the individual work by the institution (Related to ambience of the institution)	0	2	0	0	0
19	Rate the encouragement for taking-up consultancy works (Related to ambience of the institution)	2	0	0	0	0
20	Rate the uniform work distribution and work load for all the faculty in the department (Related to ambience of the institution)	1	1	0	0	0



B. Kalpana  
PRINCIPAL

PRINCE SHRI VENKATESHWARA  
ARTS AND SCIENCE COLLEGE  
GOWRIVAKKAM, CHENNAI-600 073.



# PRINCE SHRI VENKATESWARA ARTS AND SCIENCE COLLEGE

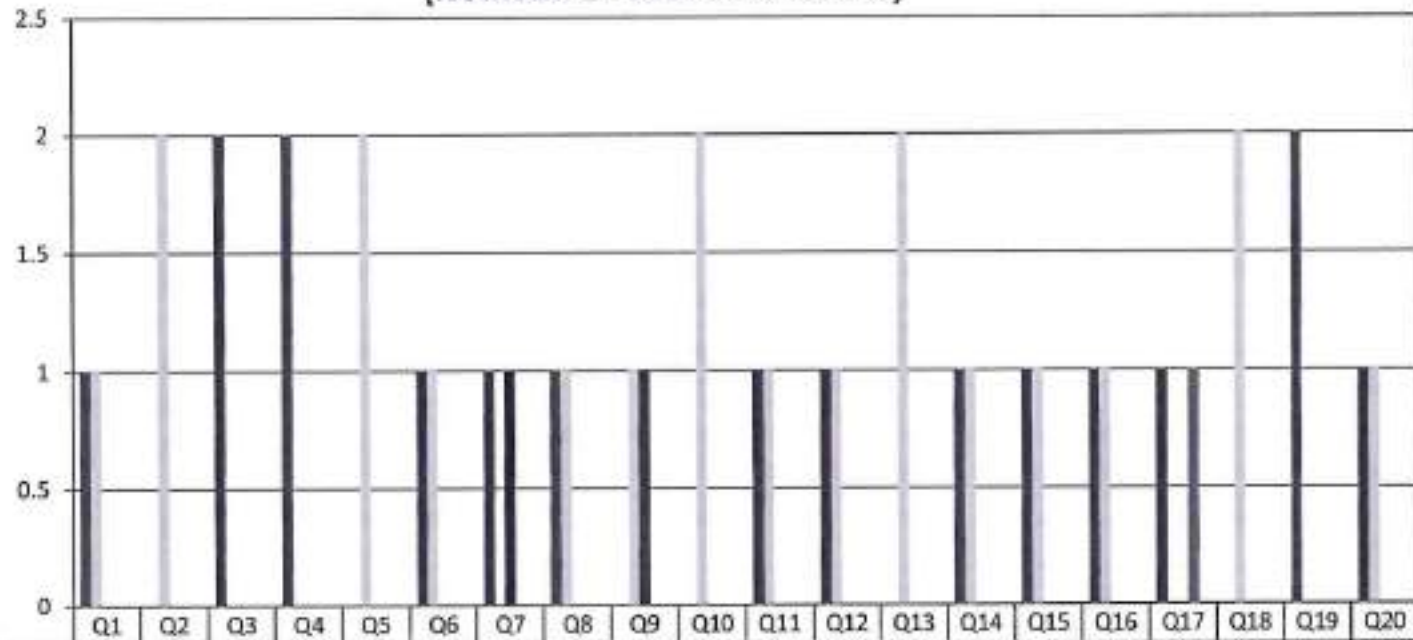
Gowrivakkam, Chennai-600073

Affiliated to University of Madras, ISO 9001:2015 Certified Institution

## FACULTY FEEDBACK ON CURRICULUM, INFRASTRUCTURE FACILITIES & AMBIENCE OF THE INSTITUTION - 2020-2021

### M.Sc. BIOTECHNOLOGY

(NUMBER OF RESPONDENTS - 2)



Strongly Agree (5)	1	0	2	2	0	1	1	1	0	0	1	1	0	1	1	1	1	0	2	1
Agree (4)	1	2	0	0	2	1	0	1	1	2	1	1	2	1	1	1	0	2	0	1
Neutral (3)	0	0	0	0	0	0	1	0	1	0	0	0	0	0	0	0	0	0	0	0
Disagree (2)	0	0	0	0	0	0	0	0	0	0	0	0	0	0	0	0	1	0	0	0
Strongly Disagree (1)	0	0	0	0	0	0	0	0	0	0	0	0	0	0	0	0	0	0	0	0



*P. Kalpana*  
**PRINCIPAL**  
 PRINCE SHRI VENKATESHWARA  
 ARTS AND SCIENCE COLLEGE  
 GOWRIVAKKAM, CHENNAI-600 073



## PRINCE SHRI VENKATESWARA ARTS AND SCIENCE COLLEGE

Gowrivakkam, Chennai-600073.

Affiliated to University of Madras, ISO 9001:2015 Certified Institution

### FACULTY FEEDBACK ON CURRICULUM, INFRASTRUCTURE FACILITIES & AMBIENCE OF THE INSTITUTION – ANALYSIS REPORT

Academic Year 2020-21

Department M.Com

Number of Respondents 2

Feedback Rate: Strongly Agree (5), Agree (4), Neutral (3), Disagree (2), Strongly Disagree (1)

S. No	Feedback on Curriculum, infrastructure facilities & ambience of the institution	5	4	3	2	1
1	Rate the sequence of the courses provided in the curriculum (Related to Curriculum)	1	1	0	0	0
2	Rate the syllabus of the courses in relation to the competencies expected out of the course (Related to Curriculum)	1	0	1	0	0
3	Rate the Curriculum facilitation for adoption of new techniques/education tools / strategies in teaching. (Related to Curriculum)	1	1	0	0	0
4	Rate the coverage of Programme / course outcome with the curriculum (Related to Curriculum)	0	1	1	0	0
5	Rate the allocation of the credits and contact hours (L-T-P) to the courses (Related to Curriculum)	0	2	0	0	0
6	Rate the offering of the electives in terms of their relevance to the specialization streams and technological advancements (Related to Curriculum)	1	1	0	0	0
7	Rate the courses in terms of extra learning or self-learning considering the design of the courses. (Related to Curriculum)	1	0	1	0	0
8	Rate the professional development, faculty development and administrative training programs conducted by the institution (Related to Curriculum)	1	1	0	0	0



## PRINCE SHRI VENKATESWARA ARTS AND SCIENCE COLLEGE

Gowrivakkam, Chennai-600073.

Affiliated to University of Madras, ISO 9001:2015 Certified Institution

9	Rate the composition of the courses in terms of Language papers, Core Papers, Allied Papers, Elective Papers, Soft Skills, Non-major Electives, Value Education, Project etc. (Related to Curriculum)	0	1	1	0	0
10	Rate the availability of text books, reference books, Digital Resources and Reading Material Support facilities in library and research environment (Related to infrastructure facilities & ambience of the institution)	0	2	0	0	0
11	Rate the infrastructure available in the college/ department and its usage efficiently (Related to infrastructure facilities & ambience of the institution)	1	1	0	0	0
12	Rate the classroom, lab, IT and other facilities (Related to infrastructure facilities & ambience of the institution)	0	2	0	0	0
13	Rate the maintenance of classrooms, laboratory, sports facilities, faculty cabin, toilets, rest rooms etc. (Related to infrastructure facilities & ambience of the institution)	2	0	0	0	0
14	Rate the encouragement by the institution for performing research, startup and entrepreneurial activities by the faculty (Related to ambience of the institution)	1	1	0	0	0
15	Rate the opportunity extended and financial aid to participate in Faculty development, Conferences, Workshops and etc., (Related to ambience of the institution)	1	1	0	0	0
16	Rate the working environment such as the relationship with co-workers and superiors, organizational culture etc. (Related to ambience of the institution)	1	1	0	0	0
17	Rate the faculty welfare measures taken by the institution (Related to ambience of the institution)	1	0	0	1	0
18	Rate the recognition/ appraisal system / Incentive/ Appreciation of the individual work by the institution (Related to ambience of the institution)	0	2	0	0	0
19	Rate the encouragement for taking-up consultancy works (Related to ambience of the institution)	2	0	0	0	0
	Rate the uniform-work distribution and work load for all the faculty in the department (Related to ambience of the institution)	1	1	0	0	0



*B. Kalpana*  
**PRINCIPAL**  
PRINCE SHRI VENKATESHWARA  
ARTS AND SCIENCE COLLEGE  
GOWRIVAKKAM, CHENNAI-600 073.



**PRINCE SHRI VENKATESWARA ARTS AND SCIENCE COLLEGE**

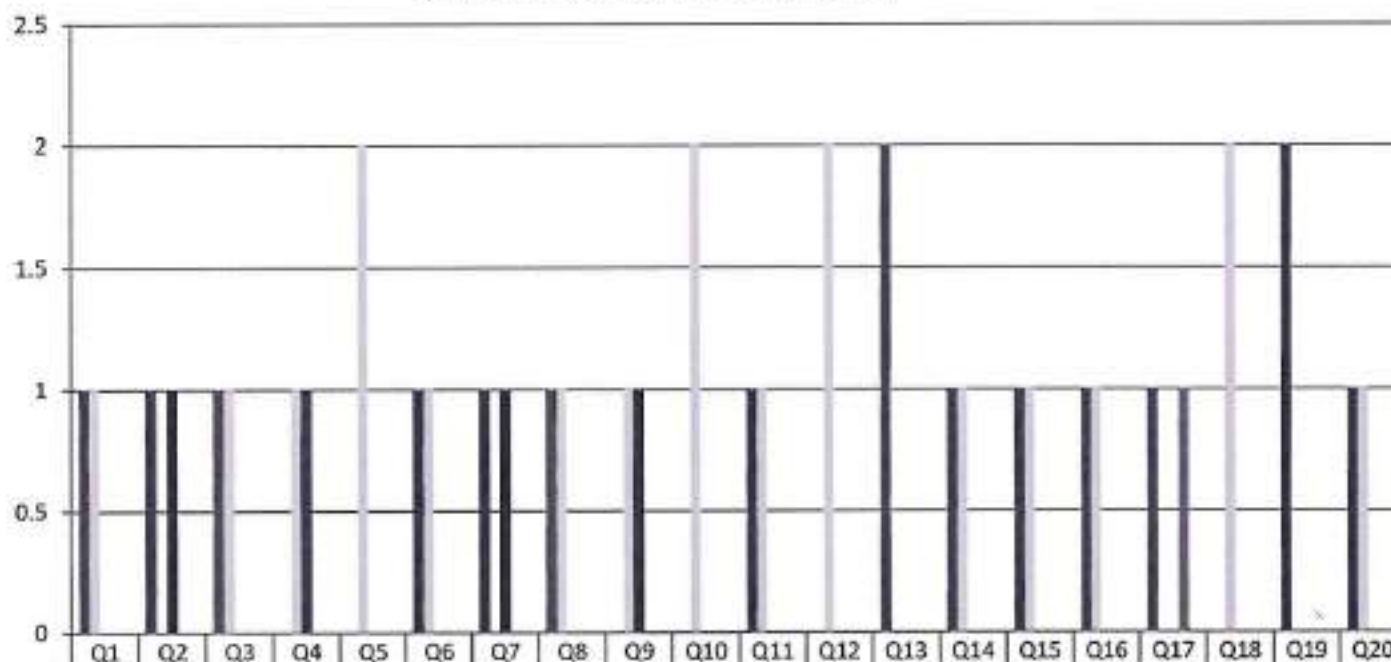
Gowrivakkam, Chennai-600073

Affiliated to University of Madras, ISO 9001:2015 Certified Institution

**FACULTY FEEDBACK ON CURRICULUM, INFRASTRUCTURE FACILITIES & AMBIENCE OF THE INSTITUTION - 2020-2021**

**M.COM**

(NUMBER OF RESPONDENTS - 2)



	Q1	Q2	Q3	Q4	Q5	Q6	Q7	Q8	Q9	Q10	Q11	Q12	Q13	Q14	Q15	Q16	Q17	Q18	Q19	Q20
Strongly Agree (5)	1	1	1	0	0	1	1	1	0	0	1	0	2	1	1	1	1	0	2	1
Agree (4)	1	0	1	1	2	1	0	1	1	2	1	2	0	1	1	1	0	2	0	1
Neutral (3)	0	1	0	1	0	0	1	0	1	0	0	0	0	0	0	0	0	0	0	0
Disagree (2)	0	0	0	0	0	0	0	0	0	0	0	0	0	0	0	0	1	0	0	0
Strongly Disagree (1)	0	0	0	0	0	0	0	0	0	0	0	0	0	0	0	0	0	0	0	0



*B. Kalpani*  
**PRINCIPAL**  
 PRINCE SHRI VENKATESWARA  
 ARTS AND SCIENCE COLLEGE  
 GOWRIVAKKAM, CHENNAI-600 073.